



Benham & Reeves

Bach House, Nine Elms, SW8

£658 per week, £2,850 per month + fees

🛏 1 Bedroom 🚿 1 Bathroom 🛋 Furnished

Furnished apartment with private balcony situated in a popular development with excellent resident facilities and located next to Nine Elms Tube Station.

Please [click here](#) for full detail

Property features

Recently redecorated | Balcony | Large open planned living | Dishwasher | Separate sleeping area | EPC-B | 24 Hour concierge | Gym | Residence Lounge | Nine Elms Station

For more information about this property,
please call our Nine Elms branch on

020 3282 3700



Redress & Client Money Protection :
Benham and Reeves are members of The Property Ombudsman redress scheme and have Client Money protection with ARLA Propertymark.
You can find more information on our website at <https://www.benhamandreeves.com/membership/>

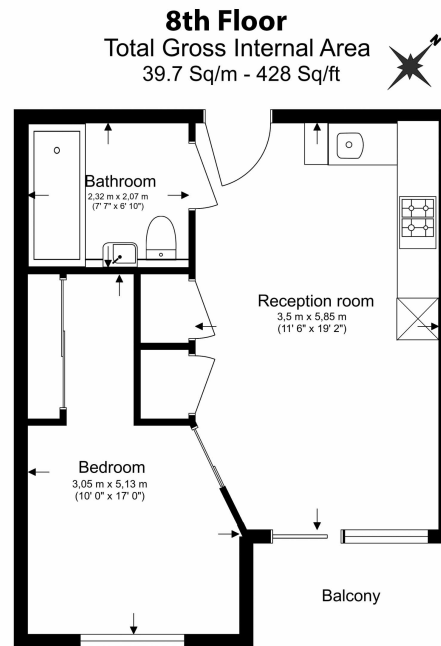
Benham & Reeves



Bach House, Nine Elms, SW8

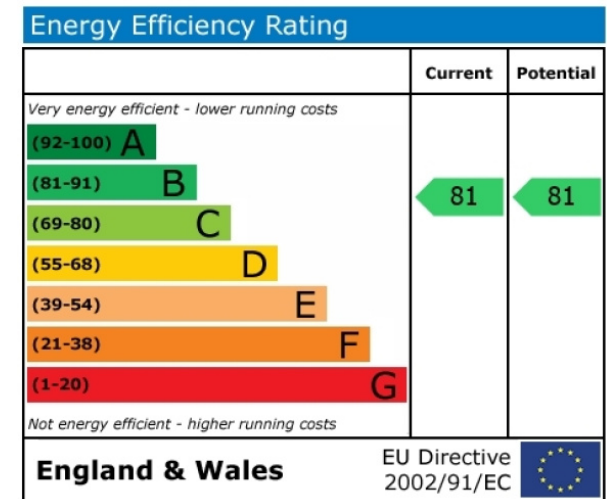
£658 per week, £2,850 per month + fees

www.benhams.com



Benham & Reeves

Floor Plan measurements are approximate and are for illustrative purposes only. While we do not doubt the floor plans accuracy, we make no guarantee, warranty or representation as to the accuracy and completeness of the floor plan.



London branches open six days a week Mon - Sat

Canary Wharf | City | Colindale | Dartmouth Park | Ealing | Fulham
Hammersmith | Hampstead | Highgate | Hyde Park | Kensington | Kew
Knightsbridge | Nine Elms | Shoreditch | Southall | Surrey Quays
Wapping | Wembley | White City | Woolwich

International offices

China | Hong Kong SAR | India | Indonesia | Qatar | Malaysia | Middle East |
Singapore | South Africa | Thailand | Turkey



Benham & Reeves