



Benham & Reeves

Harrow View, Harrow, HA1

£508 per week, £2,201 per month + fees

 2 Bedrooms  2 Bathrooms  Furnished

A spacious, apartment finished to an impeccable standard throughout, with a private balcony, underfloor heating and floor-to-ceiling windows. Excellently located within walking distance to all local amenities and Harrow & Wealdstone underground and Overground station.

Please [click here](#) for full detail

Property features

Residents gym | 2 Bedrooms | 2 Bathrooms | Wood floors | Balcony | EPC-B | Furnished | Transport links | Amenities | Harrow & Wealdstone underground and Overground station

For more information about this property,
please call our Wembley branch on

020 8187 3100



Redress & Client Money Protection :
Benham and Reeves are members of The Property Ombudsman redress scheme and have Client Money protection with ARLA Propertymark.
You can find more information on our website at <https://www.benhams.com/membership/>

Benham & Reeves

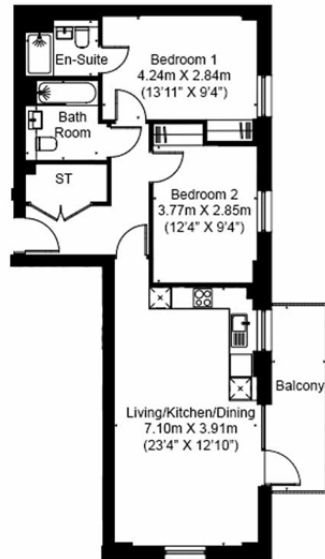


Harrow View, Harrow, HA1

£508 per week, £2,201 per month + fees

www.benhams.com

Total Gross Internal Area
72.6 Sq/m - 781.9 Sq/ft



Floor Plan measurements are approximate and are for illustrative purposes only. While we do not doubt the floor plans accuracy, we make no guarantee, warranty or representation as to the accuracy and completeness of the floor plan.

Score	Energy rating	Current	Potential
92+	A		
81-91	B	86 B	86 B
69-80	C		
55-68	D		
39-54	E		
21-38	F		
1-20	G		

London branches open six days a week Mon - Sat

Canary Wharf | City | Colindale | Dartmouth Park | Ealing | Fulham
Hammersmith | Hampstead | Highgate | Hyde Park | Kensington | Kew
Knightsbridge | Nine Elms | Shoreditch | Southall | Surrey Quays
Wapping | Wembley | White City | Woolwich

International offices

China | Hong Kong SAR | India | Indonesia | Qatar | Malaysia | Middle East | Pakistan
Singapore | South Africa | Thailand | Turkey



Benham & Reeves