



Benham & Reeves

Collet House, Nine Elms, SW8

£669 per week, £2,900 per month + fees

 1 Bedroom  1 Bathroom  Furnished

A modern 7th floor apartment situated within a popular development with excellent amenities in Wandsworth. Perfectly located for the new Nine Elms Underground Station (Northern Line) and Vauxhall station (Victoria Line).

Please [click here](#) for full detail

Property features

One double bedroom | One Bathroom | Balcony | Open planned living | Dishwasher | EPC-B | Concierge | Gym | Residence Lounge | Nearby Nine Elms Tube Station

For more information about this property, please call our Nine Elms branch on

020 3282 3700

Redress & Client Money Protection :

Benham and Reeves are members of The Property Ombudsman redress scheme and have Client Money protection with ARLA Propertymark. You can find more information on our website at <https://www.benhams.com/membership/>

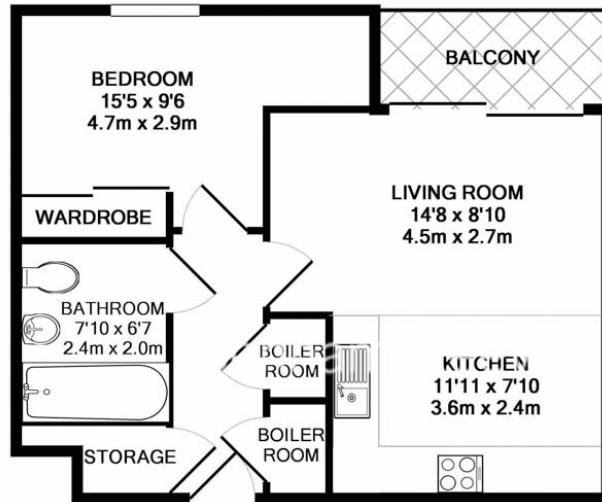


Benham & Reeves

Collet House, Nine Elms, SW8

£669 per week, £2,900 per month + fees

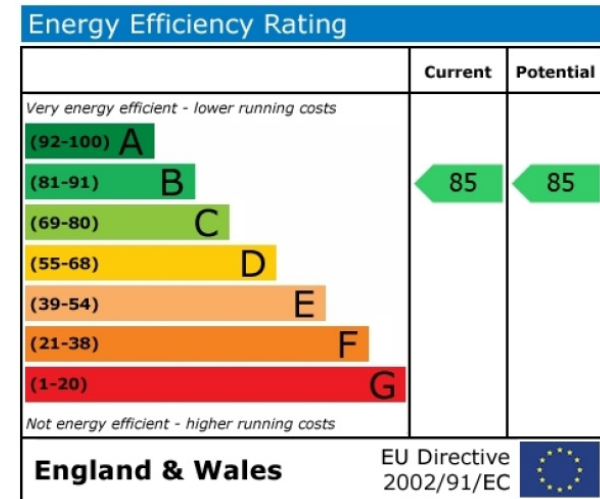
www.benhams.com



36.CH
TOTAL APPROX. FLOOR AREA 485 SQ.FT. (45.1 SQ.M.)



Whilst every attempt has been made to ensure the accuracy of the floor plan contained here, measurements of doors, windows, rooms and any other items are approximate and no responsibility is taken for any error, omission, or mis-statement. This plan is for illustrative purposes only and should be used as such by any prospective purchaser. The services, systems and appliances shown have not been tested and no guarantee as to their operability or efficiency can be given
Made with Metropix ©2017



London branches open six days a week Mon - Sat

Canary Wharf | City | Colindale | Dartmouth Park | Ealing | Fulham
Hammersmith | Hampstead | Highgate | Hyde Park | Kensington | Kew
Knightsbridge | Nine Elms | Shoreditch | Southall | Surrey Quays
Wapping | Wembley | White City | Woolwich

International offices

China | Hong Kong SAR | India | Indonesia | Qatar | Malaysia | Middle East |
Singapore | South Africa | Thailand | Turkey



Benham & Reeves