



Benham & Reeves

Gladwin Tower, Nine Elms, SW8

£877 per week, £3,800 per month + fees

🛏️ 2 Bedrooms 🚿 2 Bathrooms 🛋️ Furnished

A spacious modern 15th floor apartment situated within a popular development on Wandsworth Road ideally located for Waterloo, Victoria, Green Park, and Oxford Street with the Victoria Line

Please [click here](#) for full detail

Property features

Two double bedrooms | Two bathrooms | Balcony | Air cooling | Dishwasher | EPC-B | 24 hour concierge | Gym | Residence lounge | Nine Elms Tube Station

For more information about this property,
please call our Nine Elms branch on

020 3282 3700

Redress & Client Money Protection :

Benham and Reeves are members of The Property Ombudsman redress scheme and have Client Money protection with ARLA Propertymark. You can find more information on our website at <https://www.benhamandreeves.com/membership/>



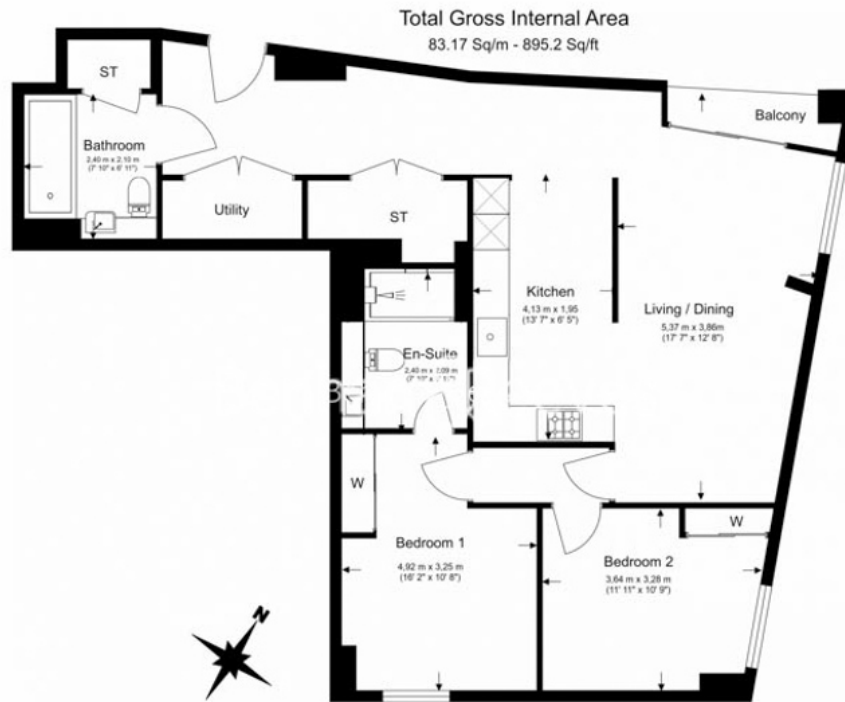
Benham & Reeves



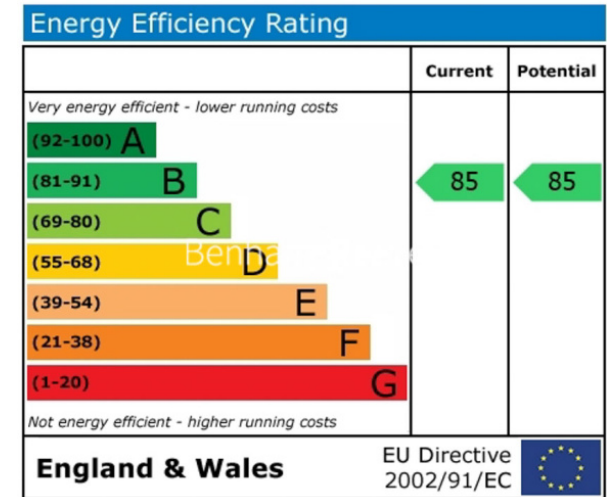
Gladwin Tower, Nine Elms, SW8

£877 per week, £3,800 per month + fees

www.benhams.com



Floor Plan measurements are approximate and are for illustrative purposes only. While we do not doubt the floor plans accuracy, we make no guarantee, warranty or representation as to the accuracy and completeness of the floor plan.



London branches open six days a week Mon - Sat

Canary Wharf | City | Colindale | Dartmouth Park | Ealing | Fulham
Hammersmith | Hampstead | Highgate | Hyde Park | Kensington | Kew
Knightsbridge | Nine Elms | Shoreditch | Southall | Surrey Quays
Wapping | Wembley | White City | Woolwich

International offices

China | Hong Kong SAR | India | Indonesia | Qatar | Malaysia | Middle East | Pakistan
Singapore | South Africa | Thailand | Turkey



Benham & Reeves