



Benham & Reeves

Bondway, Nine Elms, SW8

£775 per week, £3,358 per month + fees

 1 Bedroom  1 Bathroom  Furnished

A stunning 35th floor apartment, with private winter garden, situated in a sought-after Tower development boasting 5* facilities a short walk to the River Thames and located next to Vauxhall Station.

Please [click here](#) for full detail

Property features

35th floor | One Double bedroom | Furnished | Air cooling | Stunning views | EPC-C | Gym | 24 hour concierge | Swimming Pool | Vauxhall Station

For more information about this property,
please call our Nine Elms branch on

020 3282 3700

Redress & Client Money Protection :

Benham and Reeves are members of The Property Ombudsman redress scheme and have Client Money protection with ARLA Propertymark. You can find more information on our website at <https://www.benhamandreeves.com/membership/>



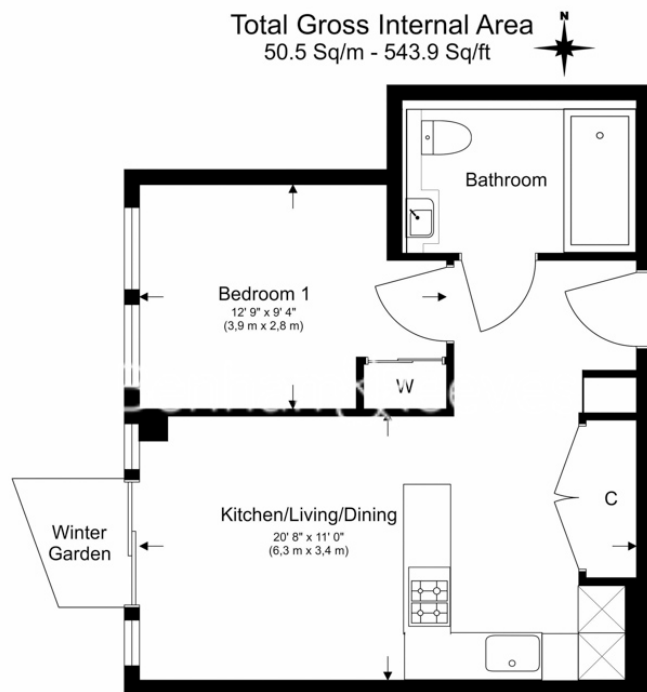
Benham & Reeves



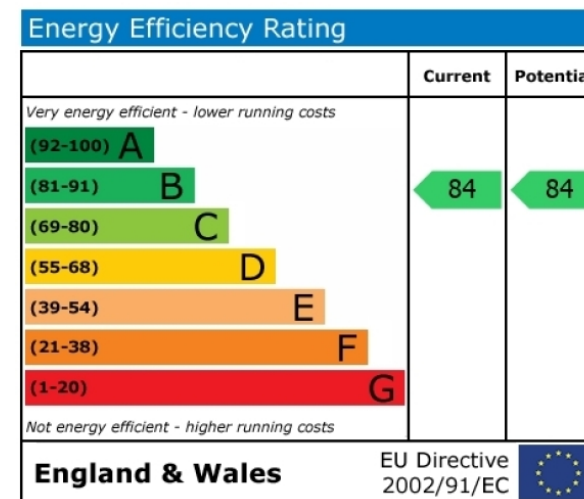
Bondway, Nine Elms, SW8

£775 per week, £3,358 per month + fees

www.benhams.com



Floor Plan measurements are approximate and are for illustrative purposes only. While we do not doubt the floor plans accuracy, we make no guarantee, warranty or representation as to the accuracy and completeness of the floor plan.



London branches open six days a week Mon - Sat

Canary Wharf | City | Colindale | Dartmouth Park | Ealing | Fulham
Hammersmith | Hampstead | Highgate | Hyde Park | Kensington | Kew
Knightsbridge | Nine Elms | Shoreditch | Southall | Surrey Quays
Wapping | Wembley | White City | Woolwich

International offices

China | Hong Kong SAR | India | Israel | Malaysia | Middle East | Pakistan
Qatar | Singapore | South Africa | Thailand | Turkey



Benham & Reeves