



Benham & Reeves

Carnation way, One Thames City, SW8

£1,500 per week, £6,500 per month + fees

 3 Bedrooms  2 Bathrooms  Furnished

A high specification furnished 35th floor apartment, with stunning views and located just off the River Thames and good Transport options with Vauxhall Station and Nine Elms Station. .

Please [click here](#) for full detail

Property features

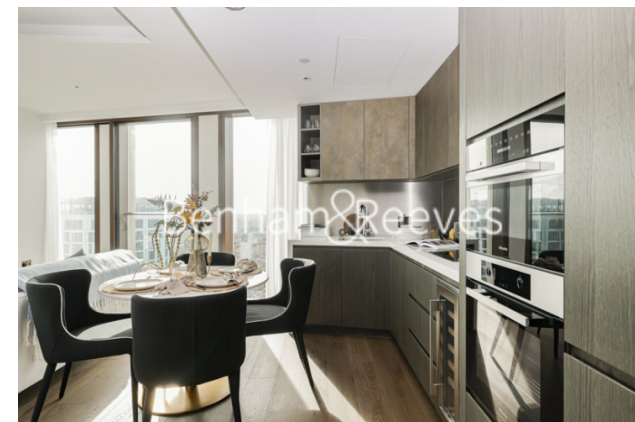
Furnished | Three bedrooms | Two bathrooms | 36 th floor | Air cooling | EPC-B | 24 hour concierge | Swimming pool | Gym | Nine Elms and Vauxhall station

For more information about this property,
please call our Nine Elms branch on

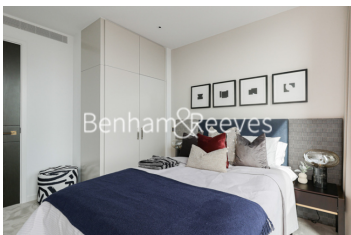
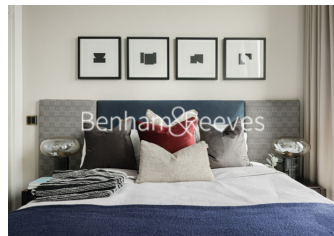
020 3282 3700

Redress & Client Money Protection :

Benham and Reeves are members of The Property Ombudsman redress scheme and have Client Money protection with ARLA Propertymark. You can find more information on our website at <https://www.benhamandreeves.com/membership/>



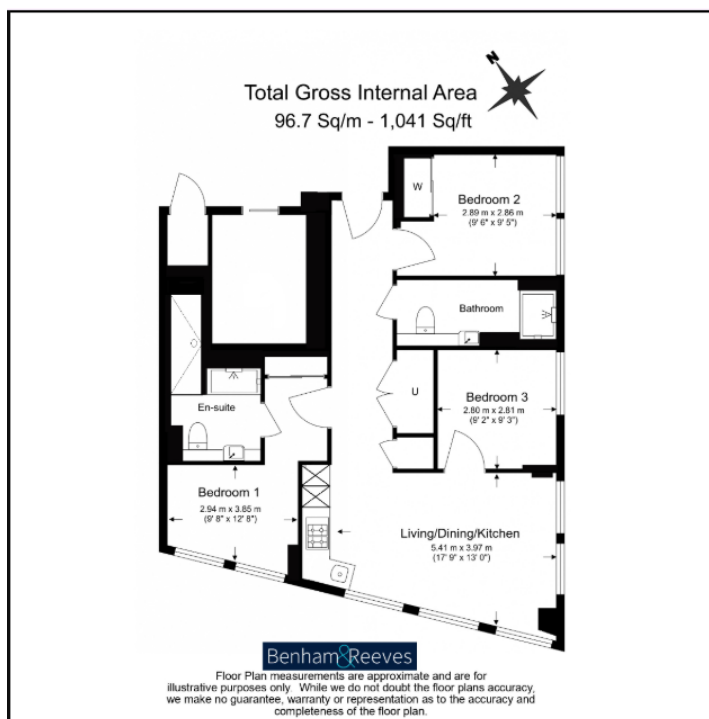
Benham&Reeves



Carnation way, One Thames City, SW8

£1,500 per week, £6,500 per month + fees

www.benhams.com



Score	Energy rating	Current	Potential
92+	A		
81-91	B	84 B	84 B
69-80	C		
55-68	D		
39-54	E		
21-38	F		
1-20	G		

London branches open six days a week Mon - Sat

Canary Wharf | City | Colindale | Dartmouth Park | Ealing | Fulham
Hammersmith | Hampstead | Highgate | Hyde Park | Kensington | Kew
Knightsbridge | Nine Elms | Shoreditch | Southall | Surrey Quays
Wapping | Wembley | White City | Woolwich

International offices

China | Hong Kong SAR | India | Indonesia | Qatar | Malaysia | Middle East |
Singapore | South Africa | Thailand | Turkey



Benham & Reeves