



Benham&Reeves

## **Agar House, Orchard Place, E14**

£520 per week, £2,253 per month + fees

 1 Bedroom     1 Bathroom     Furnished

A bright 6th floor apartment with direct River views situated in a sought-after development with secure parking. A short walk from Clapham Junction

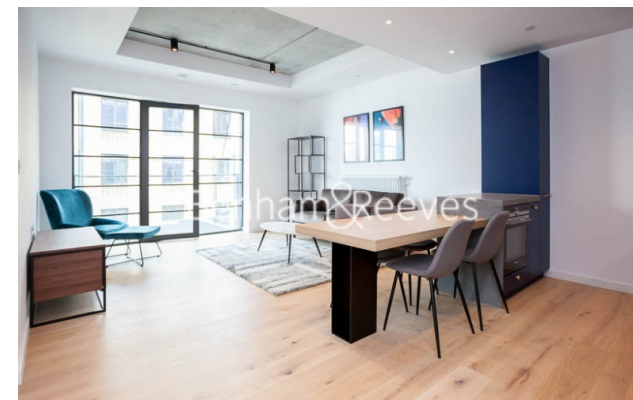
Please [click here](#) for full detail

## Property features

**Furnished One Bedroom Apartment | 5\* Resident Amenities - Cinema, Pool, Gym, Spa | Large Open Plan Reception | Fitted Kitchen with good storage | Balcony | EPC-B | 24 Hours Concierge | Residents Lounge | Riverside setting | Nearby Canning Town Station**

For more information about this property,  
please call our Canary Wharf branch on

**020 8036 3200**



Redress & Client Money Protection :  
Benham and Reeves are members of The Property Ombudsman redress scheme and have Client Money protection with ARLA Propertymark.  
You can find more information on our website at <https://www.benhamandreeves.com/membership/>

Benham & Reeves



# Agar House, Orchard Place, E14

£520 per week, £2,253 per month + fees

[www.benhams.com](http://www.benhams.com)



## London branches open six days a week Mon - Sat

Canary Wharf | City | Colindale | Dartmouth Park | Ealing | Fulham  
Hammersmith | Hampstead | Highgate | Hyde Park | Kensington | Kew  
Knightsbridge | Nine Elms | Shoreditch | Southall | Surrey Quays  
Wapping | Wembley | White City | Woolwich

## International offices

China | Hong Kong SAR | India | Indonesia | Qatar | Malaysia | Middle East | Pakistan  
Singapore | South Africa | Thailand | Turkey

