



Benham & Reeves

Phoenix Court, Oval, SE11

£800 per week, £3,467 per month + fees

 2 Bedrooms  2 Bathrooms 
Furnished/UnFurnished

Recently built spacious apartment located between Oval and Vauxhall with Vauxhall Station providing good transport options on the Northern Line.

Please [click here](#) for full detail

Property features

Brand New | Two Double Bedroom | Two Bathrooms | Furnished | Balcony | EPC-B | 24 hour Concierge | Residence Gym | Supermarket on Site | Oval and Vauxhall Stations

For more information about this property,
please call our Nine Elms branch on

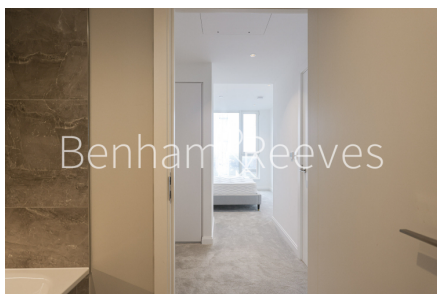
020 3282 3700

Redress & Client Money Protection :

Benham and Reeves are members of The Property Ombudsman redress scheme and have Client Money protection with ARLA Propertymark. You can find more information on our website at <https://www.benhams.com/membership/>



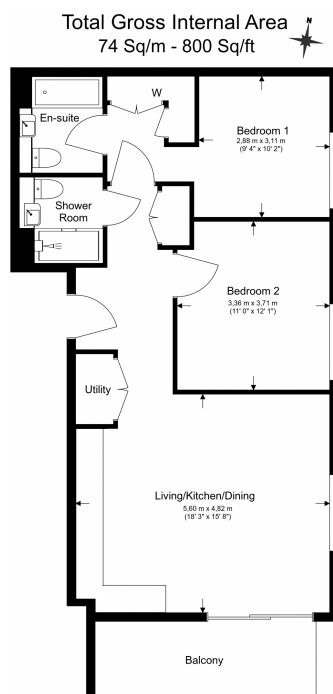
Benham&Reeves



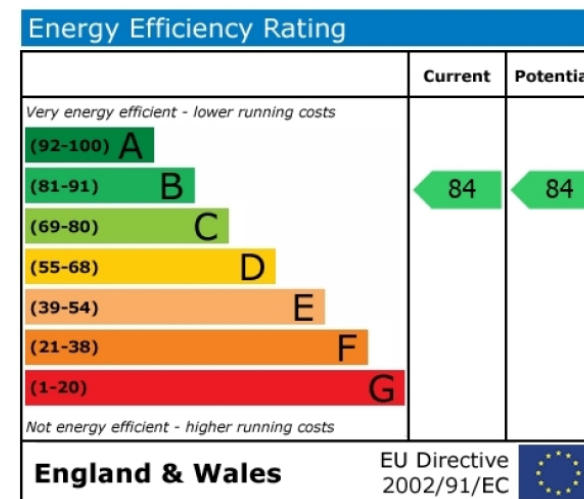
Phoenix Court, Oval, SE11

£800 per week, £3,467 per month + fees

www.benhams.com



Floor Plan measurements are approximate and are for illustrative purposes only. While we do not doubt the floor plans accuracy, we make no guarantee, warranty or representation as to the accuracy and completeness of the floor plan.



London branches open six days a week Mon - Sat

Canary Wharf | City | Colindale | Dartmouth Park | Ealing | Fulham
Hammersmith | Hampstead | Highgate | Hyde Park | Kensington | Kew
Knightsbridge | Nine Elms | Shoreditch | Southall | Surrey Quays
Wapping | Wembley | White City | Woolwich

International offices

China | Hong Kong SAR | India | Israel | Malaysia | Middle East | Pakistan
Qatar | Singapore | South Africa | Thailand | Turkey



Benham & Reeves