



Benham & Reeves

Juniper Gardens, Oval, SE11

£808 per week, £3,501 per month + fees

 2 Bedrooms  2 Bathrooms  Furnished

A brand new spacious and furnished apartment situated in a sought-after development with Tesco onsite. Conveniently located the minutes on foot from Oval, Vauxhall, and Kennington Stations giving access to the Northern and Victoria lines.

Please [click here](#) for full detail

Property features

Brand new | Two double bedrooms | Two bathrooms | Balcony | Air cooling | EPC- B | 24 hour concierge | Gym | Vauxhall, Oval and Kennington Stations

For more information about this property,
please call our Nine Elms branch on

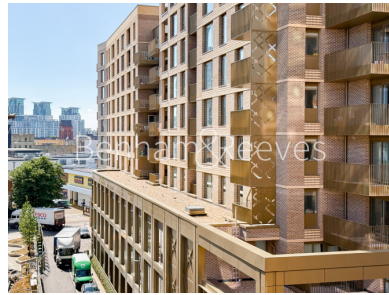
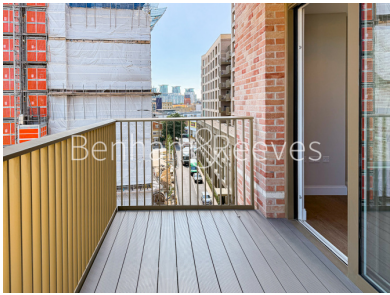
020 3282 3700

Redress & Client Money Protection :

Benham and Reeves are members of The Property Ombudsman redress scheme and have Client Money protection with ARLA Propertymark. You can find more information on our website at <https://www.benhams.com/membership/>



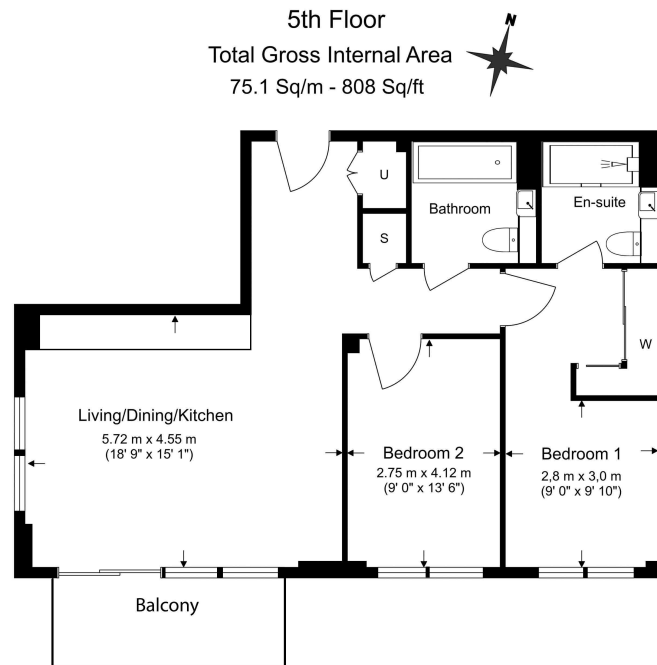
Benham&Reeves



Juniper Gardens, Oval, SE11

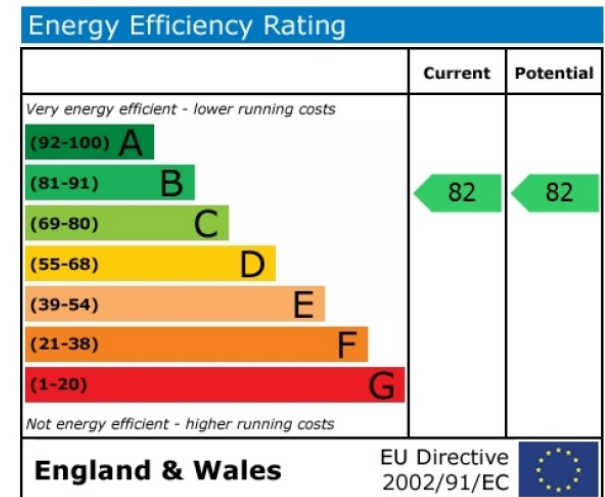
£808 per week, £3,501 per month + fees

www.benhams.com



Benham & Reeves

Floor Plan measurements are approximate and are for illustrative purposes only. While we do not doubt the floor plans accuracy, we make no guarantee, warranty or representation as to the accuracy and completeness of the floor plan.



London branches open six days a week Mon - Sat

Canary Wharf | City | Colindale | Dartmouth Park | Ealing | Fulham
Hammersmith | Hampstead | Highgate | Hyde Park | Kensington | Kew
Knightsbridge | Nine Elms | Shoreditch | Southall | Surrey Quays
Wapping | Wembley | White City | Woolwich

International offices

China | Hong Kong SAR | India | Indonesia | Qatar | Malaysia | Middle East | Pakistan
Singapore | South Africa | Thailand | Turkey



Benham & Reeves