



Benham & Reeves

Hill Street, Mayfair, W1J

£740 per week, £3,207 per month + fees

 1 Bedroom  1 Bathroom 
Furnished/UnFurnished

A well-presented 6th floor ONE-BEDROOM apartment in a well-maintained HILL STREET in the heart of fashionable MAYFAIR, neighbouring the famous Berkeley Square. Residents benefit from a daytime porter & lush private gardens. Green Park & Bond Street Underground Stations are within a short walk.

Please [click here](#) for full detail

Property features

Prestigious Mayfair Location | Art Deco Building | On-Site Building Manager | 24-Hr Maintenance Helpline | Furnished or Unfurnished | EPC-C | Digital TVs | Private Residents Garden | Berkeley Square - 3 Minutes | Nearby Bond Street Station and Green Park Station

For more information about this property,
please call our Knightsbridge branch on

020 7581 2112



Redress & Client Money Protection :

Benham and Reeves are members of The Property Ombudsman redress scheme and have Client Money protection with ARLA Propertymark. You can find more information on our website at <https://www.benham.com/membership/>

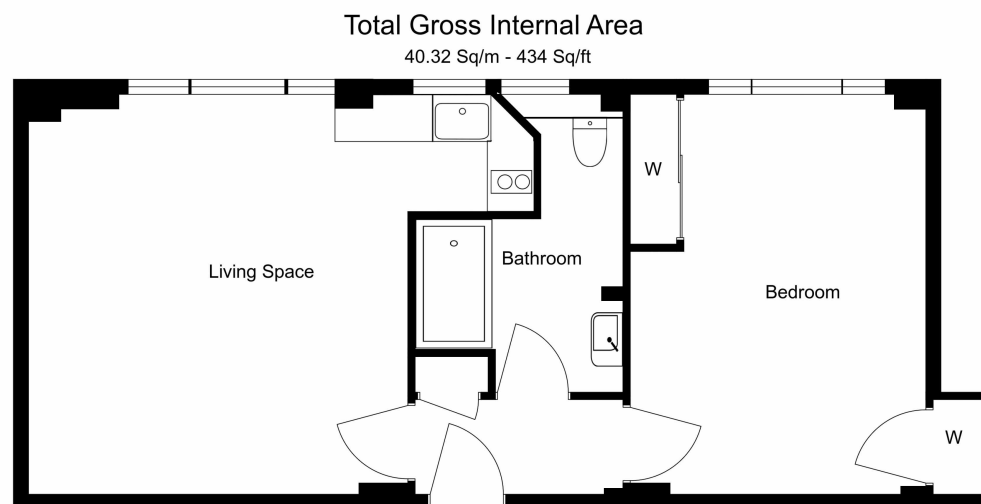
Benham & Reeves



Hill Street, Mayfair, W1J

£740 per week, £3,207 per month + fees

www.benhams.com



Floor Plan measurements are approximate and are for illustrative purposes only. While we do not doubt the floor plans accuracy, we make no guarantee, warranty or representation as to the accuracy and completeness of the floor plan.

Score	Energy rating	Current	Potential
92+	A		
81-91	B		
69-80	C	78 C	80 C
55-68	D		
39-54	E		
21-38	F		
1-20	G		

London branches open six days a week Mon - Sat

Canary Wharf | City | Colindale | Dartmouth Park | Ealing | Fulham
Hammersmith | Hampstead | Highgate | Hyde Park | Kensington | Kew
Knightsbridge | Nine Elms | Shoreditch | Southall | Surrey Quays
Wapping | Wembley | White City | Woolwich

International offices

China | Hong Kong SAR | India | Israel | Malaysia | Middle East | Pakistan
Qatar | Singapore | South Africa | Thailand | Turkey



Benham&Reeves