



Benham & Reeves

Dockside House, Park Street, SW6

£554 per week, £2,400 per month + fees

🛋 Studio 🚿 1 Bathroom 🛏 Furnished

Contemporary Manhattan apartment situated within a prestigious riverside Development, with stunning resident facilities, on the fringes of Fulham and Chelsea. Positioned close to The River Thames and the amenities of Fulham.

Please [click here](#) for full detail

Property features

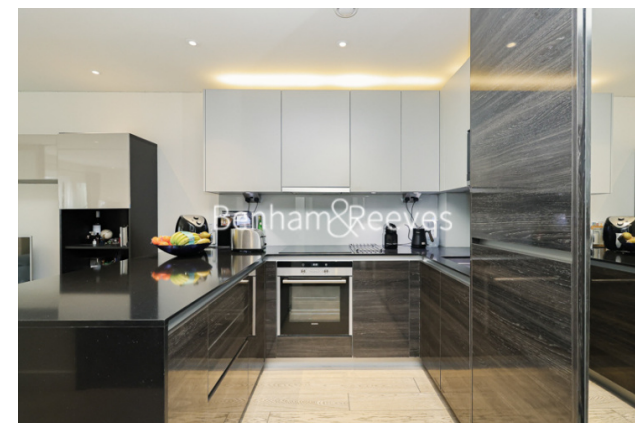
Manhattan Apartment | 2nd Floor with a lift | Quality Furnished / Storage Room | Fully Fitted Kitchen Integrated with Well-Known Appliances | 24 Hr Concierge / 24 Hr Security / Communal Gardens / Bars | EPC-B | Abundance of light | Large Balcony | Gym, swimming pool, sauna, steam room and jacuzzi | Nearby Fulham Broadway (District Line)

For more information about this property,
please call our Fulham branch on

020 7348 7620

Redress & Client Money Protection :

Benham and Reeves are members of The Property Ombudsman redress scheme and have Client Money protection with ARLA Propertymark. You can find more information on our website at <https://www.benhams.com/membership/>



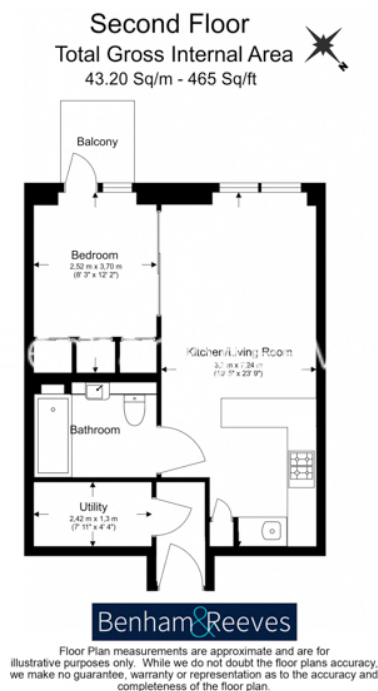
Benham & Reeves



Dockside House, Park Street, SW6

£554 per week, £2,400 per month + fees

www.benhams.com



Score	Energy rating	Current	Potential
92+	A		
81-91	B	81 B	81 B
69-80	C		
55-68	D		
39-54	E		
21-38	F		
1-20	G		

London branches open six days a week Mon - Sat

Canary Wharf | City | Colindale | Dartmouth Park | Ealing | Fulham
Hammersmith | Hampstead | Highgate | Hyde Park | Kensington | Kew
Knightsbridge | Nine Elms | Shoreditch | Southall | Surrey Quays
Wapping | Wembley | White City | Woolwich

International offices

China | Hong Kong SAR | India | Indonesia | Qatar | Malaysia | Middle East |
Singapore | South Africa | Thailand | Turkey



Benham & Reeves