



Benham & Reeves

Bondway, Parry St, SW8

£1,270 per week, £5,503 per month + fees

 2 Bedrooms  2 Bathrooms  Furnished

A luxury apartment located on the 15th floor with spectacular views of the River Thames and Central London, ideally located a 2-minute walk from Vauxhall Station (Victoria Line).

Please [click here](#) for full detail

Property features

15th floor | Two Double Bedrooms | Two Bathrooms | Air Cooling | River Views | EPC-B | 24 Hour Concierge | Swimming Pool | Gym | Vauxhall Station

For more information about this property,
please call our Nine Elms branch on

020 3282 3700



Redress & Client Money Protection :

Benham and Reeves are members of The Property Ombudsman redress scheme and have Client Money protection with ARLA Propertymark. You can find more information on our website at <https://www.benhams.com/membership/>

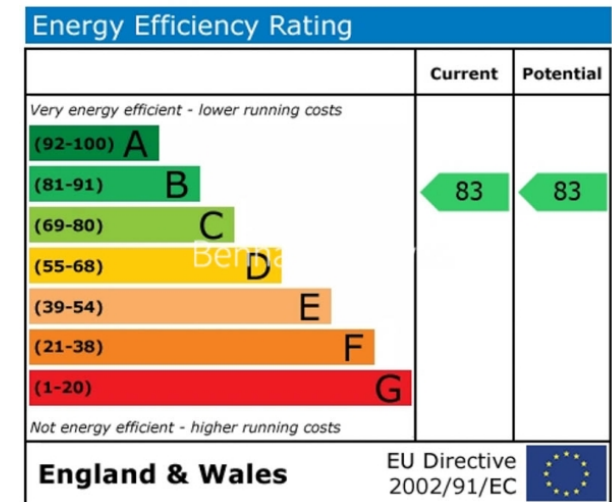
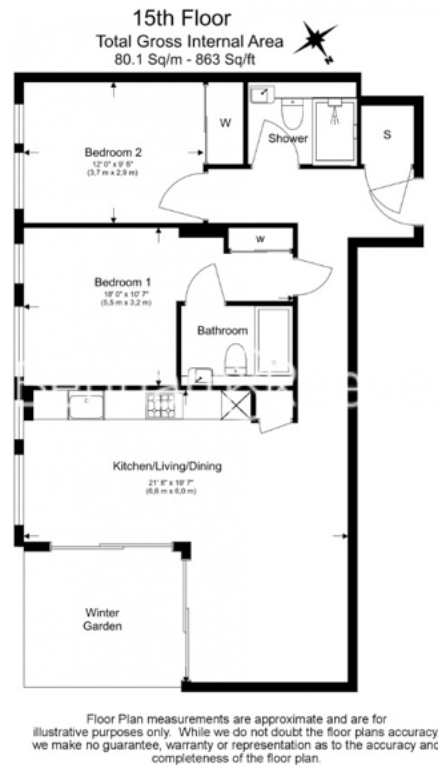
Benham & Reeves



Bondway, Parry St, SW8

£1,270 per week, £5,503 per month + fees

www.benhams.com



London branches open six days a week Mon - Sat

Canary Wharf | City | Colindale | Dartmouth Park | Ealing | Fulham
Hammersmith | Hampstead | Highgate | Hyde Park | Kensington | Kew
Knightsbridge | Nine Elms | Shoreditch | Southall | Surrey Quays
Wapping | Wembley | White City | Woolwich

International offices

China | Hong Kong SAR | India | Israel | Malaysia | Middle East | Pakistan
Qatar | Singapore | South Africa | Thailand | Turkey



Benham & Reeves