



Benham & Reeves

Bondway, Parry St., SW8

£1,350 per week, £5,850 per month + fees

 2 Bedrooms  2 Bathrooms  Furnished

A brand-new luxury 15th floor apartment with South London views, ideally located a 2-minute walk from Vauxhall Station (Victoria Line).

Please [click here](#) for full detail

Property features

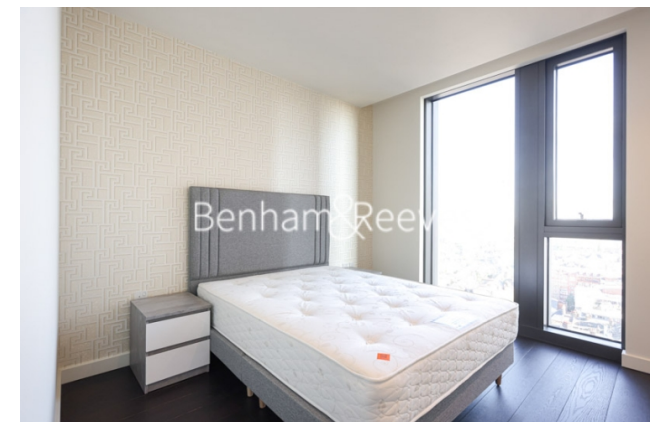
Brand new | Two bathrooms | Winter garden | Air cooling | 15th Floor | EPC-B | 24 Hour concierge | Swimming Pool | 5* Facilities | Vauxhall and Nine Elms tube station

For more information about this property,
please call our Nine Elms branch on

020 3282 3700

Redress & Client Money Protection :

Benham and Reeves are members of The Property Ombudsman redress scheme and have Client Money protection with ARLA Propertymark. You can find more information on our website at <https://www.benhams.com/membership/>



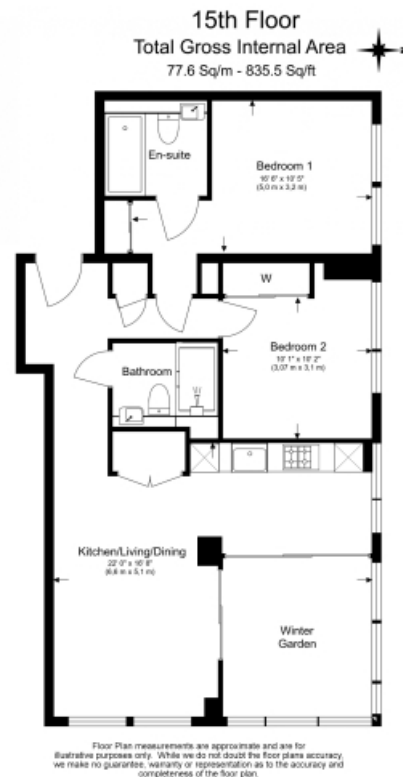
Benham & Reeves



Bondway, Parry St., SW8

£1,350 per week, £5,850 per month + fees

www.benhams.com



Energy Efficiency Rating		
	Current	Potential
Very energy efficient - lower running costs		
(92-100) A		
(81-91) B	84	84
(69-80) C		
(55-68) D		
(39-54) E		
(21-38) F		
(1-20) G		
Not energy efficient - higher running costs		
England & Wales	EU Directive 2002/91/EC	

London branches open six days a week Mon - Sat

Canary Wharf | City | Colindale | Dartmouth Park | Ealing | Fulham
Hammersmith | Hampstead | Highgate | Hyde Park | Kensington | Kew
Knightsbridge | Nine Elms | Shoreditch | Southall | Surrey Quays
Wapping | Wembley | White City | Woolwich

International offices

China | Hong Kong SAR | India | Israel | Malaysia | Middle East | Pakistan
Qatar | Singapore | South Africa | Thailand | Turkey



Benham & Reeves