



Benham & Reeves

## The Duo Tower, Penn Street, N1

£600 per week, £2,600 per month + fees

 1 Bedroom    1 Bathroom    Furnished

Well-presented apartment situated within a modern development located on the Shoreditch borders in Hoxton, a short walk to The City and easy reach from Old Street Underground and Hoxton Overground stations.

Please [click here](#) for full detail

## Property features

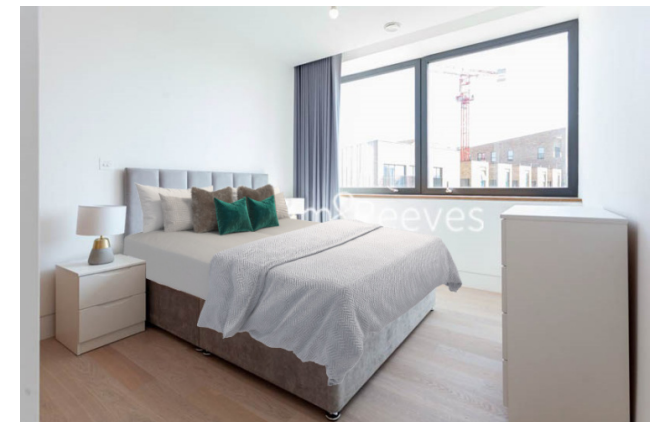
**Well Presented One Bedroom Apartment | Bright Reception With Balcony | Open Plan Fitted Kitchen With Integrated Appliances | Well Equipped Double Bedroom | Bespoke Bathroom | EPC-B | Wood Floors & Full-Length Windows Throughout | Underfloor Heating | Easy Reach Of The City, Shoreditch & Angel | Walking Distance To Old Street & Hoxton Stations**

For more information about this property,  
please call our Wapping branch on

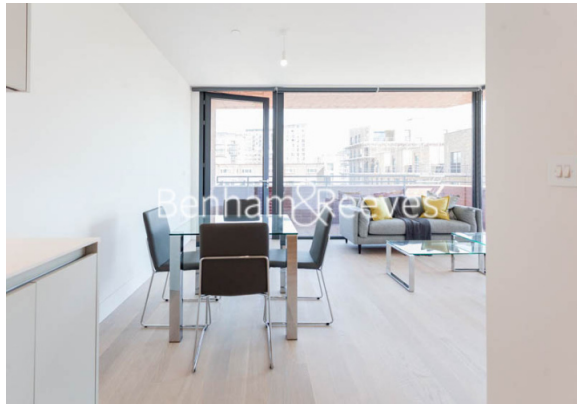
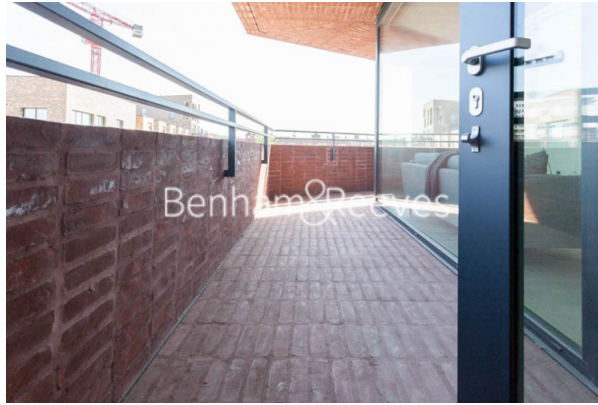
**020 7680 8900**

Redress & Client Money Protection :

Benham and Reeves are members of The Property Ombudsman redress scheme and have Client Money protection with ARLA Propertymark. You can find more information on our website at <https://www.benhams.com/membership/>



Benham & Reeves



# The Duo Tower, Penn Street, N1

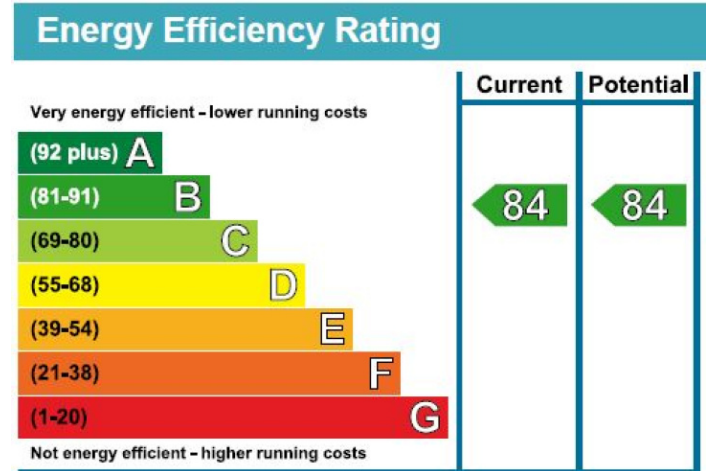
£600 per week, £2,600 per month + fees

www.benhams.com



Total Area 602sqft/56sqm

Floor Plan measurements are approximate and are for illustrative purposes only. While we do not doubt the floor plans accuracy, we make no guarantee, warranty or representation as to the accuracy and completeness of the floor plan.



## London branches open six days a week Mon - Sat

Canary Wharf | City | Colindale | Dartmouth Park | Ealing | Fulham  
 Hammersmith | Hampstead | Highgate | Hyde Park | Kensington | Kew  
 Knightsbridge | Nine Elms | Shoreditch | Southall | Surrey Quays  
 Wapping | Wembley | White City | Woolwich

## International offices

China | Hong Kong SAR | India | Indonesia | Qatar | Malaysia | Middle East | Pakistan  
 Singapore | South Africa | Thailand | Turkey

