



Benham & Reeves

Laker House, Pontoon Dock, E16

£554 per week, £2,401 per month + fees

 2 Bedrooms  2 Bathrooms  Furnished

A modern riverside apartment boasting two private balconies with direct River views, situated in a sought-after riverside development next to Pontoon Dock DLR station.

Please [click here](#) for full detail

Property features

Two Double Bedrooms | 2 Bathrooms | Bright Open Planned Living | Furnished | 2 South Facing Balconies with Direct River views | EPC-B | Residents Gym, Pool & Spa | 24 Hour Concierge & Security | Sainsbury's, Starbucks, Pharmacy and Windjammer Bar and more | Pontoon Dock & West Silvertown DLR | Thames Clippers

For more information about this property,
please call our Canary Wharf branch on

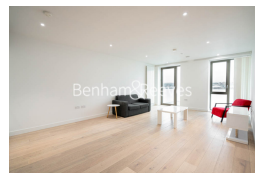
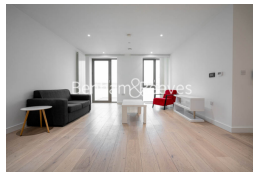
020 8036 3200

Redress & Client Money Protection :

Benham and Reeves are members of The Property Ombudsman redress scheme and have Client Money protection with ARLA Propertymark. You can find more information on our website at <https://www.benhams.com/membership/>



Benham&Reeves



Laker House, Pontoon Dock, E16

£554 per week, £2,401 per month + fees

www.benhams.com

Score	Energy rating	Current	Potential
92+	A		
81-91	B	86 B	86 B
69-80	C		
55-68	D		
39-54	E		
21-38	F		
1-20	G		

London branches open six days a week Mon - Sat

Canary Wharf | City | Colindale | Dartmouth Park | Ealing | Fulham
Hammersmith | Hampstead | Highgate | Hyde Park | Kensington | Kew
Knightsbridge | Nine Elms | Shoreditch | Southall | Surrey Quays
Wapping | Wembley | White City | Woolwich

International offices

China | Hong Kong SAR | India | Indonesia | Qatar | Malaysia | Middle East | Pakistan
Singapore | South Africa | Thailand | Turkey

