



Benham & Reeves

Hemlock Street, Poplar, E14

£554 per week, £2,400 per month + fees

 2 Bedrooms  1 Bathroom  Furnished

Brand new spacious furnished apartment. It features a perfect blend of luxury and comfort with an open-plan living space, sleek finish, and a private balcony in the sought-after Heron Wharf riverside development. located in Poplar.

Please [click here](#) for full detail

Property features

Two Spacious Bedrooms | One Sleek Bathroom | Private Balcony | Spacious Open Plan Reception | Modern Kitchen with Integrated Appliances - Including Dishwa | EPC-B | Sate of the art Furnishing | Brand New - Be the First to Live Here | Triple Glazed Windows - Great sound proofing and energy effi | Nearby Canning Town Underground and DLR Station

For more information about this property,
please call our Canary Wharf branch on

020 8036 3200

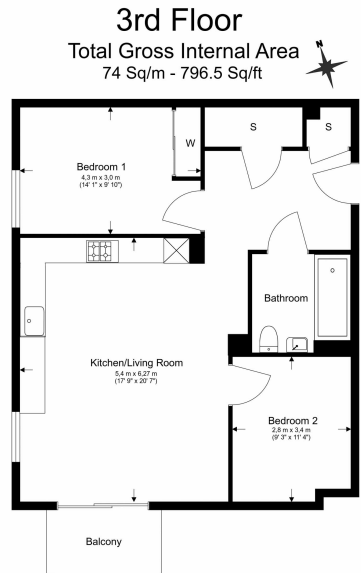




Hemlock Street, Poplar, E14

£554 per week, £2,400 per month + fees

www.benhams.com



Benham & Reeves

Floor Plan measurements are approximate and are for illustrative purposes only. While we do not doubt the floor plans accuracy, we make no guarantee, warranty or representation as to the accuracy and completeness of the floor plan.

Score	Energy rating	Current	Potential
92+	A		
81-91	B	85 B	85 B
69-80	C		
55-68	D		
39-54	E		
21-38	F		
1-20	G		

London branches open six days a week Mon - Sat

Canary Wharf | City | Colindale | Dartmouth Park | Ealing | Fulham
Hammersmith | Hampstead | Highgate | Hyde Park | Kensington | Kew
Knightsbridge | Nine Elms | Shoreditch | Southall | Surrey Quays
Wapping | Wembley | White City | Woolwich

International offices

China | Hong Kong SAR | India | Indonesia | Qatar | Malaysia | Middle East |
Singapore | South Africa | Thailand | Turkey



Benham & Reeves