



Benham&Reeves

## **Lincoln Square, Portugal Street, WC2A**

£1,625 per week, £7,042 per month + fees

 2 Bedrooms    2 Bathrooms    Furnished

Stunning 2nd floor apartment set in a desirable development surrounded by a calm and quiet sanctuary, and academic, legal, and cultural institutions. Located 6 minutes on foot from Holborn Tube Station.

Please [click here](#) for full detail

## Property features

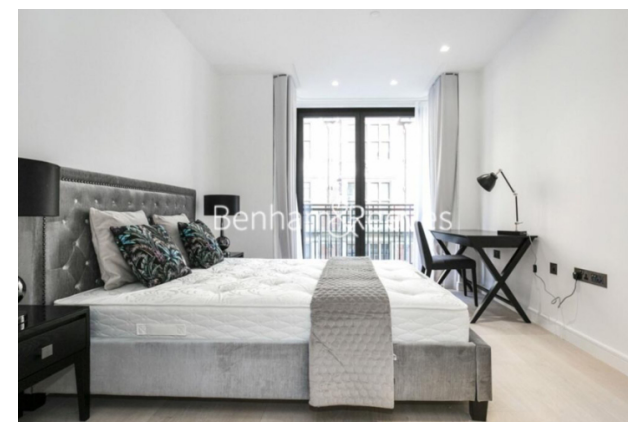
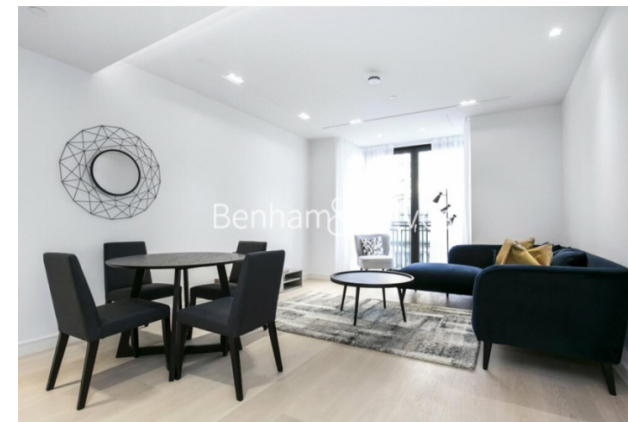
**Luxurious 2 Bedroom Apartment | Bespoke En-suite Shower Room & Bathroom | Open Plan Living Space | Fully Fitted Kitchen | Furnished | EPC-B | 24-Hour Concierge | 5\* Amenities | Holborn Tube Station**

For more information about this property,  
please call our City branch on

**020 7213 9700**

Redress & Client Money Protection :

Benham and Reeves are members of The Property Ombudsman redress scheme and have Client Money protection with ARLA Propertymark. You can find more information on our website at <https://www.benhamandreeves.com/membership/>



Benham&Reeves



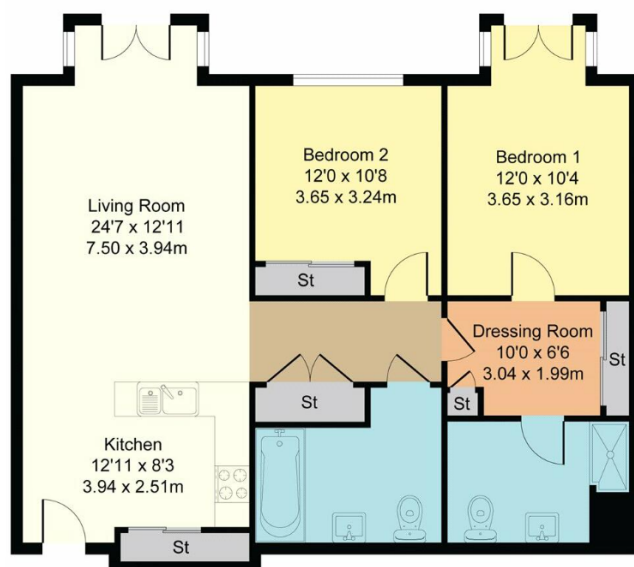
# Lincoln Square, Portugal Street, WC2A

£1,625 per week, £7,042 per month + fees

www.benhams.com

## Lincoln Square

Approximate Gross Internal Area  
953 sq ft - 88 sq m



Score	Energy rating	Current	Potential
92+	A		
81-91	B	86 B	86 B
69-80	C		
55-68	D		
39-54	E		
21-38	F		
1-20	G		

## London branches open six days a week Mon - Sat

Canary Wharf | City | Colindale | Dartmouth Park | Ealing | Fulham  
Hammersmith | Hampstead | Highgate | Hyde Park | Kensington | Kew  
Knightsbridge | Nine Elms | Shoreditch | Southall | Surrey Quays  
Wapping | Wembley | White City | Woolwich

## International offices

China | Hong Kong SAR | India | Indonesia | Qatar | Malaysia | Middle East | Pakistan  
Singapore | South Africa | Thailand | Turkey



Benham & Reeves