



Benham & Reeves

Lincoln Square, Portugal Street, WC2A

£1,119 per week, £4,849 per month + fees

 1 Bedroom  1 Bathroom  Furnished

Stunning, 6th floor apartment situated in a prestigious development within walking distance from the superb communication links of Holborn, Covent Garden and Temple.

Please [click here](#) for full detail

Property features

1 Bedroom Apartment | 1 Bathroom | Open Plan Living Space | Fully Fitted Kitchen | Furnished | EPC-B | Excellent Transport Links | Excellent Amenities including Gym, Spa, Swimming Pool, Libra | 24-Hour Concierge | Holborn Station

For more information about this property,
please call our City branch on

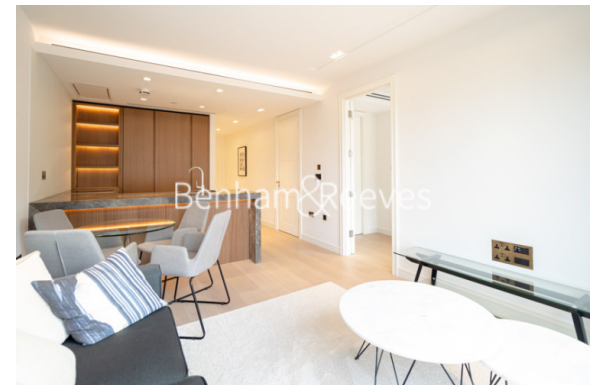
020 7213 9700

Redress & Client Money Protection :

Benham and Reeves are members of The Property Ombudsman redress scheme and have Client Money protection with ARLA Propertymark. You can find more information on our website at <https://www.benhams.com/membership/>



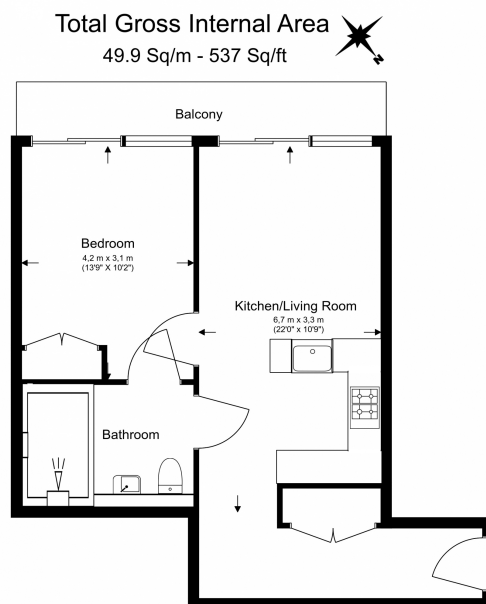
Benham & Reeves



Lincoln Square, Portugal Street, WC2A

£1,119 per week, £4,849 per month + fees

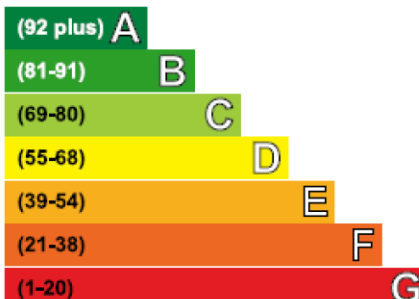
www.benhams.com



Floor Plan measurements are approximate and are for illustrative purposes only. While we do not doubt the floor plans accuracy, we make no guarantee, warranty or representation as to the accuracy and completeness of the floor plan.

Energy Efficiency Rating

Very energy efficient - lower running costs



Not energy efficient - higher running costs

Current	Potential
86	86

London branches open six days a week Mon - Sat

Canary Wharf | City | Colindale | Dartmouth Park | Ealing | Fulham
Hammersmith | Hampstead | Highgate | Hyde Park | Kensington | Kew
Knightsbridge | Nine Elms | Shoreditch | Southall | Surrey Quays
Wapping | Wembley | White City | Woolwich

International offices

China | Hong Kong SAR | India | Indonesia | Qatar | Malaysia | Middle East |
Singapore | South Africa | Thailand | Turkey



Benham & Reeves