



Benham & Reeves

Dorset House, Postmark, WC1X

£992 per week, £4,300 per month + fees

 2 Bedrooms  2 Bathrooms  Furnished

Immaculately presented furnished apartment situated in a desirable development on the intersection of Bloomsbury, Kings Cross, Clerkenwell and Farringdon. Well-connected to the amenities of Kings Cross and with Underground and Overland Stations offering diverse travel options and ease of access to Central London, the West End and St Pancras station.

Please [click here](#) for full detail

Property features

Spacious 2 Bedroom Apartment | Bespoke bathroom & Ensuite Shower | Open Plan Living Space | Fitted Kitchen | Furnished | EPC-B | Dedicated 24-hour Concierge, gym, cinema, courtyard, rooftop | Excellent Transport Links nearby | of King's Cross, Farringdon, Chancery Lane Station

For more information about this property,
please call our City branch on

020 7213 9700

Redress & Client Money Protection :

Benham and Reeves are members of The Property Ombudsman redress scheme and have Client Money protection with ARLA Propertymark. You can find more information on our website at <https://www.benhamandreeves.com/membership/>



Benham & Reeves

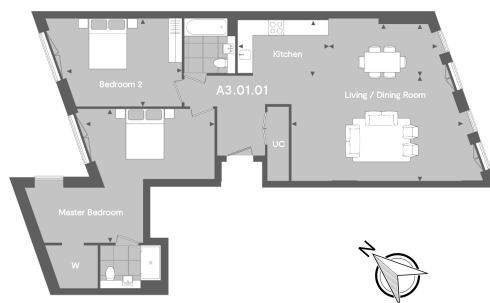


Dorset House, Postmark, WC1X

£992 per week, £4,300 per month + fees

www.benhams.com

2nd Floor
Approx gross internal area: 1231sq/ft - 114,5sq/m



Living Room	6.8 x 4.2	22'3 x 13'9
Dining Room	4.3 x 2.1	14'1 x 6'9
Kitchen	3.6 x 2.3	11'10 x 7'5
Master Bedroom	5.1 x 5.3	16'10 x 17'6
Bedroom 2	4.9 x 3.5	15'12 x 11'6

Whilst every attempt has been made to ensure the accuracy of the floor plan contained here, measurements of doors, windows, rooms and any other items are approximate and no responsibility is taken for any error, omission, or mis-statement. This plan is for illustrative purposes only and should be used as such by any prospective purchaser. The services, systems and appliances shown have not been tested and no guarantee as to their operability or efficiency can be given.
Made with Metropix 62016

Score	Energy rating	Current	Potential
92+	A		
81-91	B	88 B	88 B
69-80	C		
55-68	D		
39-54	E		
21-38	F		
1-20	G		

London branches open six days a week Mon - Sat

Canary Wharf | City | Colindale | Dartmouth Park | Ealing | Fulham
Hammersmith | Hampstead | Highgate | Hyde Park | Kensington | Kew
Knightsbridge | Nine Elms | Shoreditch | Southall | Surrey Quays
Wapping | Wembley | White City | Woolwich

International offices

China | Hong Kong SAR | India | Indonesia | Qatar | Malaysia | Middle East | Pakistan
Singapore | South Africa | Thailand | Turkey



Benham & Reeves