



Benham&Reeves

**Principal Tower, Principal Place, Worship Street,
EC2A**

£1,200 per week, £5,200 per month + fees

 2 Bedrooms  2 Bathrooms  Furnished

Luxury bathroom 34th floor apartment situated within one of London's newest, most exciting developments, moments from The City, in Fashionable Shoreditch. Positioned a brief walk from Liverpool Street Station and equal

Please [click here](#) for full detail

Property features

Spacious 2 Bedroom Apartment | Bespoke bathroom & En-suite Shower Room | Open Plan Living Space with Floor to Ceiling Windows | Kitchen integrated with Miele appliances | Furnished | EPC-B | Dedicated 24-hour Concierge, swimming pool, sauna, spa, gym | Excellent Transport links Nearby | Private Balcony | Nearby Liverpool Street Station & Shoreditch Station

For more information about this property,
please call our City branch on

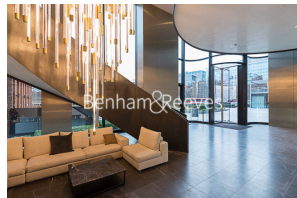
020 7213 9700

Redress & Client Money Protection :

Benham and Reeves are members of The Property Ombudsman redress scheme and have Client Money protection with ARLA Propertymark. You can find more information on our website at <https://www.benhamandreeves.com/membership/>



Benham&Reeves

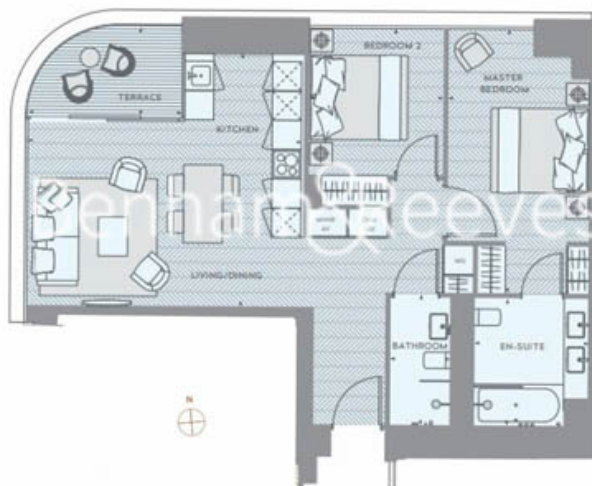


Principal Tower, Principal Place, Worship Street, EC2A

www.benhams.com

£1,200 per week, £5,200 per month + fees

Internal Area 71.4 Sq/m / 769 Sq/ft
Terrace Area 5.2 Sq/m / 57 Sq/ft



Energy Efficiency Rating

	Current	Potential
Very energy efficient - lower running costs		
(92 plus) A		
(81-91) B	85	85
(69-80) BC		
(55-68) D		
(39-54) E		
(21-38) F		
(1-20) G		
Not energy efficient - higher running costs		

London branches open six days a week Mon - Sat

Canary Wharf | City | Colindale | Dartmouth Park | Ealing | Fulham
Hammersmith | Hampstead | Highgate | Hyde Park | Kensington | Kew
Knightsbridge | Nine Elms | Shoreditch | Southall | Surrey Quays
Wapping | Wembley | White City | Woolwich

International offices

China | Hong Kong SAR | India | Indonesia | Qatar | Malaysia | Middle East |
Singapore | South Africa | Thailand | Turkey



Benham & Reeves