



Benham & Reeves

Clarence Terrace, Regent's Park NW1

£1,558 per week, £6,750 per month + fees

 2 Bedrooms  2 Bathrooms  Furnished

A contemporary 2 bedroom apartment set in Fitzrovia; central location moments from Oxford Street, Tottenham Court Road and Soho. The property's sought-after location in the heart of central London means there are an abundance of nearby travel stations. EPC-B

Please [click here](#) for full detail

Property features

2 Bedroom Duplex with Plenty of Built-in Wardrobes (1st & 2n | 2 Luxury Bathrooms (1 En-Suite Full Bathroom & 1 Family Doub | Large Reception Room with Dinning Area and Floor to Ceiling | Contemporary Separate Fully Fitted Kitchen with Well-Known A | Contemporarily Furnished / EPC-B / Ceiling Speaker & iDevice | EPC- B | 1068 Sq Ft / Air Conditioning / Under Floor Heating / Intern | 24 Hours Residents' Gym, Pool Table Room, Meeting Lounge & C | 24 Hours Concierge / 24 Hours Security / Private Meeting Roo | Moment from Tottenham Court Rd, Oxford Circus and Goodge St

For more information about this property,
please call our Hyde Park branch on

020 7402 9866

Redress & Client Money Protection :

Benham and Reeves are members of The Property Ombudsman redress scheme and have Client Money protection with ARLA Propertymark. You can find more information on our website at <https://www.benhamandreeves.com/membership/>



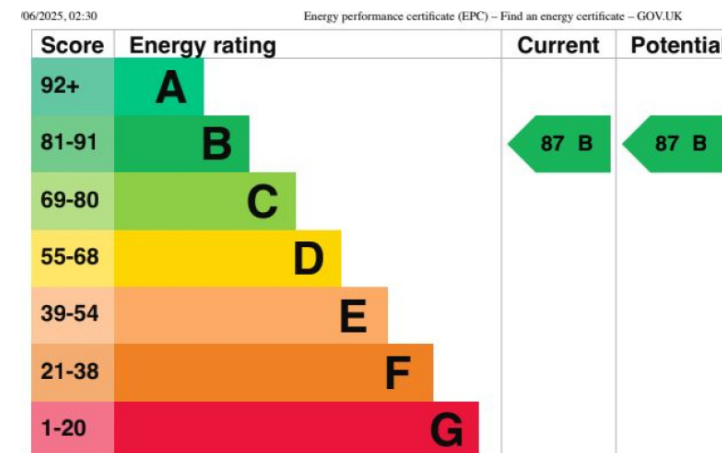
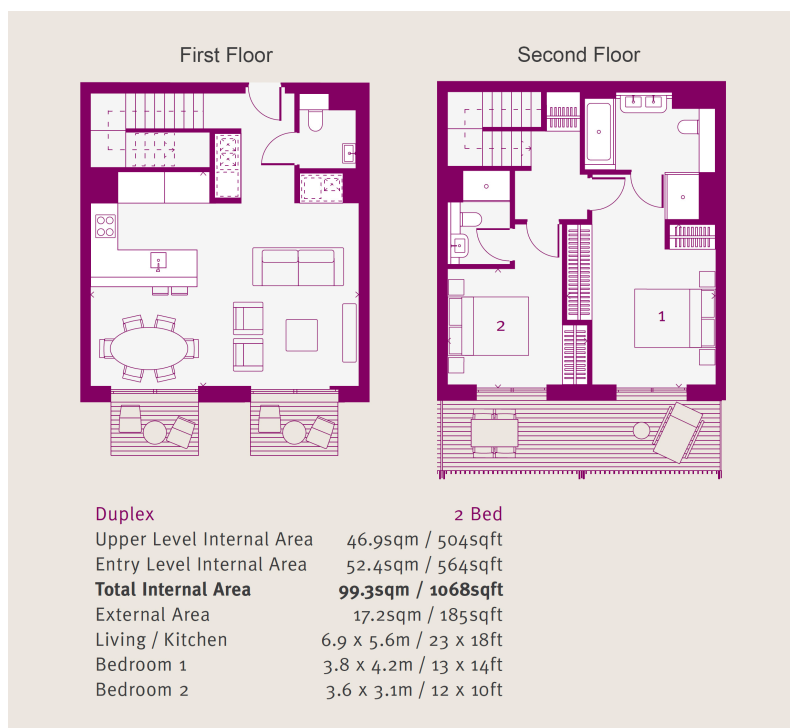
Benham&Reeves



Clarence Terrace, Regent's Park NW1

£1,558 per week, £6,750 per month + fees

www.benhams.com



London branches open six days a week Mon - Sat

Canary Wharf | City | Colindale | Dartmouth Park | Ealing | Fulham
Hammersmith | Hampstead | Highgate | Hyde Park | Kensington | Kew
Knightsbridge | Nine Elms | Shoreditch | Southall | Surrey Quays
Wapping | Wembley | White City | Woolwich

International offices

China | Hong Kong SAR | India | Indonesia | Qatar | Malaysia | Middle East |
Singapore | South Africa | Thailand | Turkey



Benham & Reeves