



Benham & Reeves

Triton Tower, Regent's Park, NW1

£470 per week, £2,037 per month + fees

 Studio  1 Bathroom  Furnished

A smart studio apartment set in the recently completed, Triton Tower building in the popular Regents Place Estate. The property is walking distance to 3 tube stations and perfectly located for easy access to anywhere in central London .EPC-B

Please [click here](#) for full detail

Property features

Studio | Bathroom | Open Plan Reception | Furnished | Fitted Kitchen | EPC-B | Under floor Heating | Close to Central London | Warren Street Station

For more information about this property,
please call our Hyde Park branch on

020 7402 9866

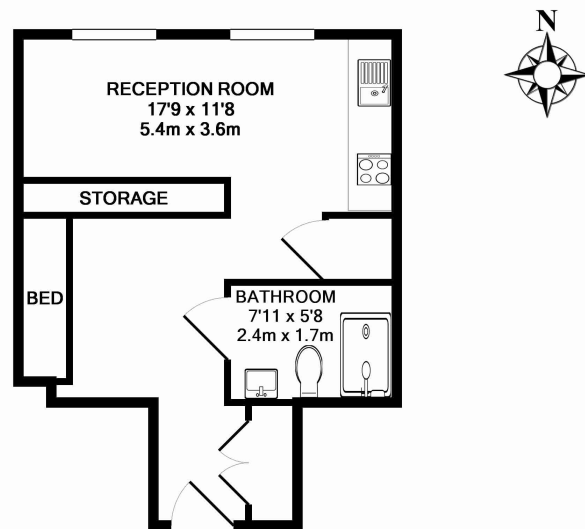




Triton Tower, Regent's Park, NW1

£470 per week, £2,037 per month + fees

www.benhams.com

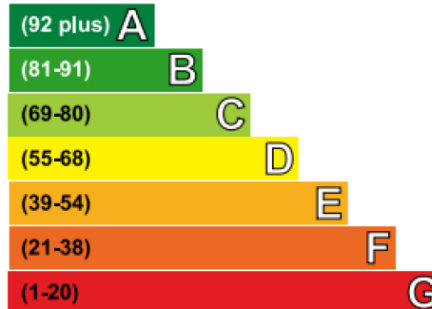


00062-701TB20BS.NW3 - 7TH FLOOR
TOTAL APPROX. FLOOR AREA 344 SQ.FT. (32.0 SQ.M.)

Whilst every attempt has been made to ensure the accuracy of the floor plan contained here, measurements of doors, windows, rooms and any other items are approximate and no responsibility is taken for any error, omission, or mis-statement. This plan is for illustrative purposes only and should be used as such by any prospective purchaser. The services, systems and appliances shown have not been tested and no guarantee as to their operability or efficiency can be given
Made with Metropix ©2015

Energy Efficiency Rating

Very energy efficient - lower running costs



Not energy efficient - higher running costs

Current	Potential
82	82

London branches open six days a week Mon - Sat

Canary Wharf | City | Colindale | Dartmouth Park | Ealing | Fulham
Hammersmith | Hampstead | Highgate | Hyde Park | Kensington | Kew
Knightsbridge | Nine Elms | Shoreditch | Southall | Surrey Quays
Wapping | Wembley | White City | Woolwich

International offices

China | Hong Kong SAR | India | Indonesia | Qatar | Malaysia | Middle East |
Singapore | South Africa | Thailand | Turkey



Benham & Reeves