



Benham & Reeves

Beckford Close, Kensington, W14

£650 per week, £2,817 per month + fees

 2 Bedrooms  2 Bathrooms 
Furnished/UnFurnished

A bright and spacious 1st floor apartment, with allocated underground parking, situated within a modern residential development in West Kensington, W14. Nearby transport options include Kensington Olympia and Earl's Court Tube stations serviced by the District and Piccadilly lines.

Please [click here](#) for full detail

Property features

2 Bedrooms | 2 Bathrooms | Reception | Furnished | Fitted Kitchen | EPC-B | Balcony | 24hr Concierge, Gym & Parking | Nearby Earl's Court Tube Station

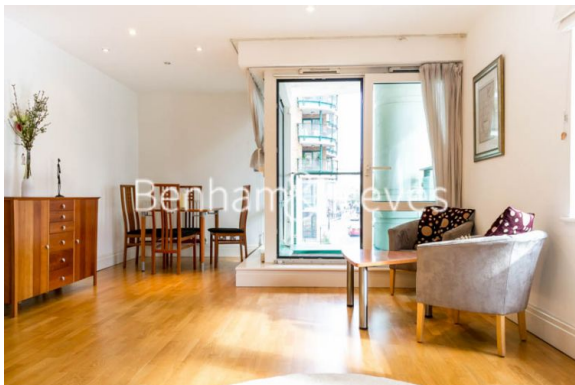
For more information about this property,
please call our Kensington branch on

020 7938 3522



Redress & Client Money Protection :
Benham and Reeves are members of The Property Ombudsman redress scheme and have Client Money protection with ARLA Propertymark.
You can find more information on our website at <https://www.benham.com/membership/>

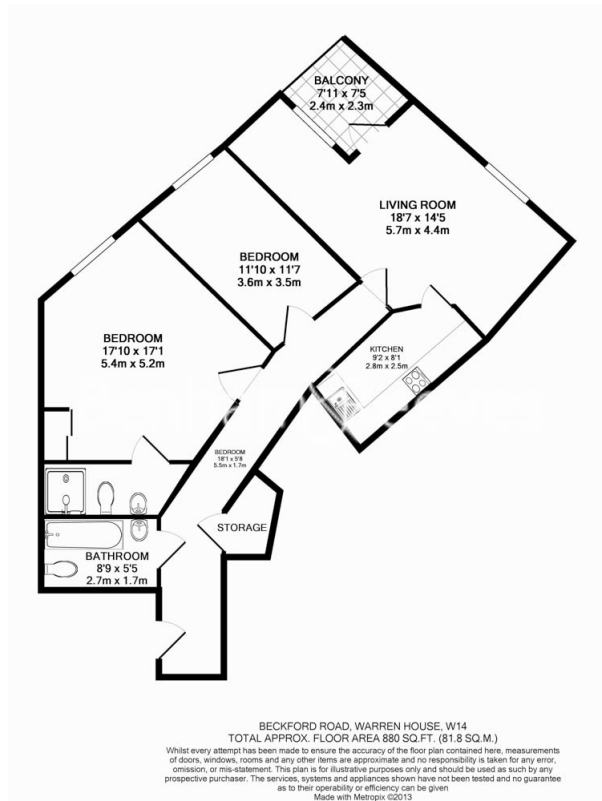
Benham & Reeves




Beckford Close, Kensington, W14

£650 per week, £2,817 per month + fees

www.benhams.com



| Energy Efficiency Rating | | |
|---|---|-----------|
| | Current | Potential |
| Very energy efficient - lower running costs | | |
| (92 plus) A | | |
| (81-91) B | | |
| (69-80) C | 79 | 82 |
| (55-68) D | | |
| (39-54) E | | |
| (21-38) F | | |
| (1-20) G | | |
| Not energy efficient - higher running costs | | |
| England & Wales | EU Directive 2002/91/EC  | |

London branches open six days a week Mon - Sat

Canary Wharf | City | Colindale | Dartmouth Park | Ealing | Fulham
Hammersmith | Hampstead | Highgate | Hyde Park | Kensington | Kew
Knightsbridge | Nine Elms | Shoreditch | Southall | Surrey Quays
Wapping | Wembley | White City | Woolwich

International offices

China | Hong Kong SAR | India | Israel | Malaysia | Middle East | Pakistan
Qatar | Singapore | South Africa | Thailand | Turkey



Benham & Reeves