



Benham & Reeves

Camden Courtyards, Rochester Place, Camden NW1

£625 per week, £2,708 per month + fees

🛏 2 Bedrooms 🚿 2 Bathrooms 🛋 Furnished

A contemporary 2 double bedroom apt with a private balcony (72 Sq Ft) set within the heart of Camden Town; popular development named - Camden Courtyards. The property's sought-after location means there are an abundance of nearby travel stations.

Please [click here](#) for full detail

Property features

2 Bedroom | 2 Bathrooms | 1 Reception | Fully Fitted Kitchen | EPC-B | Separate Large Utility Room | Communal Roof Gardens | Beautiful Concierge & Security | Near By Camden Road.

For more information about this property,
please call our Hyde Park branch on

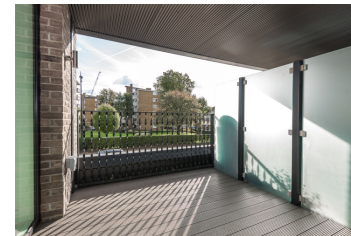
020 7402 9866

Redress & Client Money Protection :

Benham and Reeves are members of The Property Ombudsman redress scheme and have Client Money protection with ARLA Propertymark. You can find more information on our website at <https://www.benhams.com/membership/>



Benham & Reeves



Camden Courtyards, Rochester Place, Camden NW1

www.benhams.com

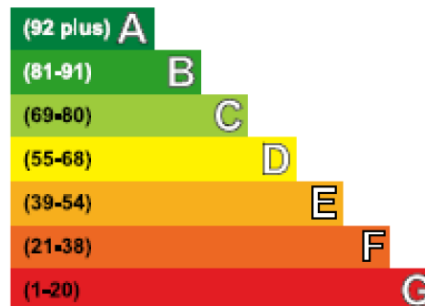
£625 per week, £2,708 per month + fees



Living/Dining/Kitchen
23'6" x 17'8" (7200 x 5400mm)
Master Bedroom
13'2" x 10'6" (4000 x 3200mm)
Bedroom 2
11'3" x 10'6" (3400 x 3200mm)
TOTAL AREA
765.2 sq ft (71.1 sq m)
Balcony
9'2" x 8'0" (2800 x 2400mm)

Energy Efficiency Rating

Very energy efficient • lower running costs



Not energy efficient • higher running costs

Current	Potential
85	85

London branches open six days a week Mon - Sat

Canary Wharf | City | Colindale | Dartmouth Park | Ealing | Fulham
Hammersmith | Hampstead | Highgate | Hyde Park | Kensington | Kew
Knightsbridge | Nine Elms | Shoreditch | Southall | Surrey Quays
Wapping | Wembley | White City | Woolwich

International offices

China | Hong Kong SAR | India | Indonesia | Qatar | Malaysia | Middle East | Pakistan
Singapore | South Africa | Thailand | Turkey



Benham & Reeves