



Benham & Reeves

**Gardnor road, Hampstead, NW3**

£347 per week, £1,504 per month + fees

 1 Bedroom    1 Bathroom    Furnished

Newly refurbished 1st floor apartment situated within a terrace conversion in the heart of Hampstead Village and surrounded by the open spaces of Hampstead Heath. A short walk from Hampstead Underground Station (Northern Line).

Please [click here](#) for full detail

## Property features

**Newly refurbished | Wood floors | Open plan kitchen | Brand new kitchen | Neutral décor | EPC-C | Available Hampstead Heath | Close to Amenities | Close to Hampstead Station**

For more information about this property,  
please call our Hampstead branch on

# 020 7435 9681

Redress & Client Money Protection :

Benham and Reeves are members of The Property Ombudsman redress scheme and have Client Money protection with ARLA Propertymark. You can find more information on our website at <https://www.benhamandreeves.com/membership/>



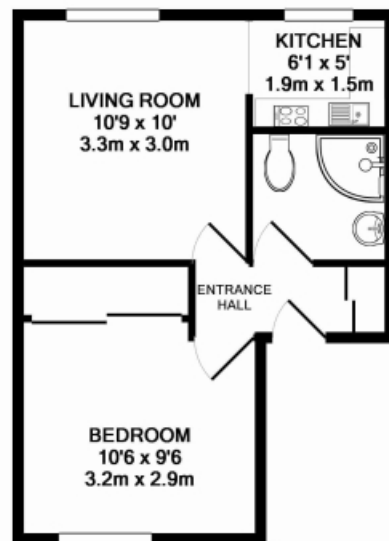
Benham&Reeves



# Gardnor road, Hampstead, NW3

£347 per week, £1,504 per month + fees

[www.benhams.com](http://www.benhams.com)



19GR.F2.NW3 - 1ST FLOOR  
TOTAL APPROX. FLOOR AREA 315 SQ.FT. (29.3 SQ.M.)

Whilst every attempt has been made to ensure the accuracy of the floor plan contained here, measurements of doors, windows, rooms and any other items are approximate and no responsibility is taken for any error, omission, or mis-statement. This plan is for illustrative purposes only and should be used as such by any prospective purchaser. The services, systems and appliances shown have not been tested and no guarantee as to their operability or efficiency can be given

Made with Metropix ©2016

| Energy Efficiency Rating                    |         |                         |
|---|---------|-------------------------|
|   | Current | Potential               |
| Very energy efficient - lower running costs |         |                         |
| (92 plus) A                                 |         |                         |
| (81-91) B                                   |         |                         |
| (69-80) C                                   | 69      | 71                      |
| (55-68) D                                   |         |                         |
| (39-54) E                                   |         |                         |
| (21-38) F                                   |         |                         |
| (1-20) G                                    |         |                         |
| Not energy efficient - higher running costs |         |                         |
| England & Wales                             |         | EU Directive 2002/91/EC |

## London branches open six days a week Mon - Sat

Canary Wharf | City | Colindale | Dartmouth Park | Ealing | Fulham  
Hammersmith | Hampstead | Highgate | Hyde Park | Kensington | Kew  
Knightsbridge | Nine Elms | Shoreditch | Southall | Surrey Quays  
Wapping | Wembley | White City | Woolwich

## International offices

China | Hong Kong SAR | India | Israel | Malaysia | Middle East | Pakistan  
Qatar | Singapore | South Africa | Thailand | Turkey



Benham & Reeves