



Benham & Reeves

No 1 Street, Royal Arsenal Riverside, SE18

£508 per week, £2,200 per month + fees

 1 Bedroom  1 Bathroom  Furnished

Contemporary, furnished 1st floor apartment situated in an iconic Riverside development by Berkeley Homes, with easy access to Woolwich DLR Stations and Woolwich Cross Rail. EPC B

Please [click here](#) for full detail

Property features

1 x Double Bedroom with Large Built in Wardrobes (1st Floor) | 1 x Luxury Bathroom | Open Plan Large Reception with Dining Area / Large Windows | Fully Fitted Kitchen Integrated with Well-Known Appliances | Air Ventilation / Underfloor Heating / Private Balcony | EPC-B | Internal Area 560 Sq Ft / Large Storage Room | Contemporary 24 Hr Concierge / 24 Hr CCTV , Resident Lounge | Resident Swimming Pool, Gym, Spa and Cinema | Moments to Elizabeth Line Tube station

For more information about this property,
please call our Woolwich branch on

020 8051 0700

Redress & Client Money Protection :

Benham and Reeves are members of The Property Ombudsman redress scheme and have Client Money protection with ARLA Propertymark. You can find more information on our website at <https://www.benhams.com/membership/>



Benham & Reeves

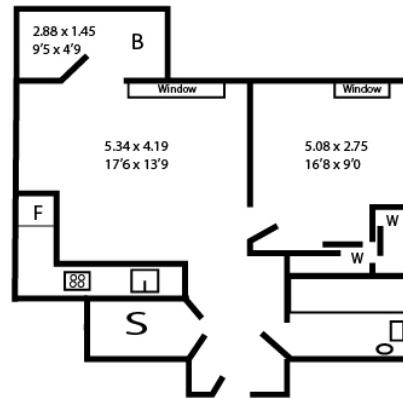
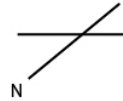


No 1 Street, Royal Arsenal Riverside, SE18

£508 per week, £2,200 per month + fees

www.benhams.com

538 sq ft / 50.0 sq m



Score	Energy rating	Current	Potential
92+	A		
81-91	B	85 B	85 B
69-80	C		
55-68	D		
39-54	E		
21-38	F		
1-20	G		

London branches open six days a week Mon - Sat

Canary Wharf | City | Colindale | Dartmouth Park | Ealing | Fulham
Hammersmith | Hampstead | Highgate | Hyde Park | Kensington | Kew
Knightsbridge | Nine Elms | Shoreditch | Southall | Surrey Quays
Wapping | Wembley | White City | Woolwich

International offices

China | Hong Kong SAR | India | Indonesia | Qatar | Malaysia | Middle East |
Singapore | South Africa | Thailand | Turkey



Benham & Reeves