



Benham & Reeves

Argyll Road, Royal Arsenal Riverside, SE18

£508 per week, £2,200 per month + fees

 2 Bedrooms  2 Bathrooms  Furnished

A beautiful 4th floor apartment, with a stunning river view and allocated parking space, situated within a desirable development with a host of amenities. Located minutes from Woolwich Arsenal Station (Elizabeth Line).

Please [click here](#) for full detail

Property features

2 bed 2 bath flat located on the 4th floor in Building 50 | Open plan kitchen with well known kitchen appliances | Private balcony with direct river view | Both double bedrooms and ensuite attached to the master room | EPC- B | Gym | Underground parking available | Close to amenities | Moment to Woolwich Tube station

For more information about this property,
please call our Woolwich branch on

020 8051 0700

Redress & Client Money Protection :

Benham and Reeves are members of The Property Ombudsman redress scheme and have Client Money protection with ARLA Propertymark. You can find more information on our website at <https://www.benham.com/membership/>



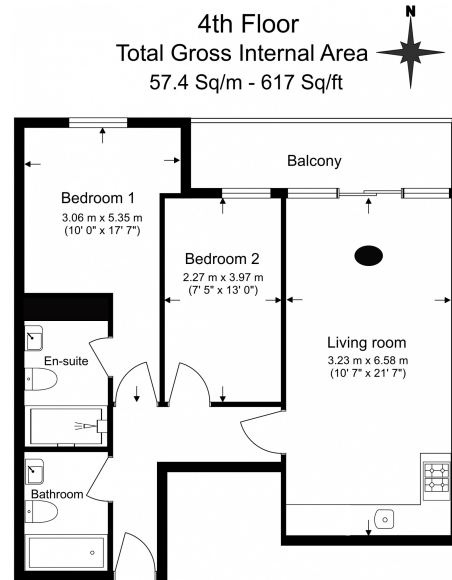
Benham & Reeves



Argyll Road, Royal Arsenal Riverside, SE18

£508 per week, £2,200 per month + fees

www.benhams.com



Benham & Reeves

Floor Plan measurements are approximate and are for illustrative purposes only. While we do not doubt the floor plans accuracy, we make no guarantee, warranty or representation as to the accuracy and completeness of the floor plan.

Score	Energy rating	Current	Potential
92+	A		
81-91	B	82 B	82 B
69-80	C		
55-68	D		
39-54	E		
21-38	F		
1-20	G		

London branches open six days a week Mon - Sat

Canary Wharf | City | Colindale | Dartmouth Park | Ealing | Fulham
Hammersmith | Hampstead | Highgate | Hyde Park | Kensington | Kew
Knightsbridge | Nine Elms | Shoreditch | Southall | Surrey Quays
Wapping | Wembley | White City | Woolwich

International offices

China | Hong Kong SAR | India | Indonesia | Qatar | Malaysia | Middle East |
Singapore | South Africa | Thailand | Turkey



Benham & Reeves