



Benham&Reeves

New Warren Lane, Royal Arsenal Riverside, SE18

£485 per week, £2,100 per month + fees

 1 Bedroom  1 Bathroom  Furnished

A contemporary spacious 2nd floor apartment with a sizable private balcony set within a popular Riverside development, with excellent on-site facilities, in the heart Woolwich. Close to an abundance of nearby travel stations. EPC- B

Please [click here](#) for full detail

Property features

Contemporary furnished 1 bed 1 bath located on the 2nd floor | Open plan kitchen with integrated kitchen appliances | Ample storage with large wardrobe | Reception Room with Dining Area & Large Windows | Air Ventilation / Double Glaze Windows | EPC- B | Resident Swimming Pool, Spa, Gym, Cinema, Lounge | Private balcony | Moments to Woolwich Tube station and DLR station

For more information about this property,
please call our Woolwich branch on

020 8051 0700

Redress & Client Money Protection :

Benham and Reeves are members of The Property Ombudsman redress scheme and have Client Money protection with ARLA Propertymark. You can find more information on our website at <https://www.benhamandreeves.com/membership/>



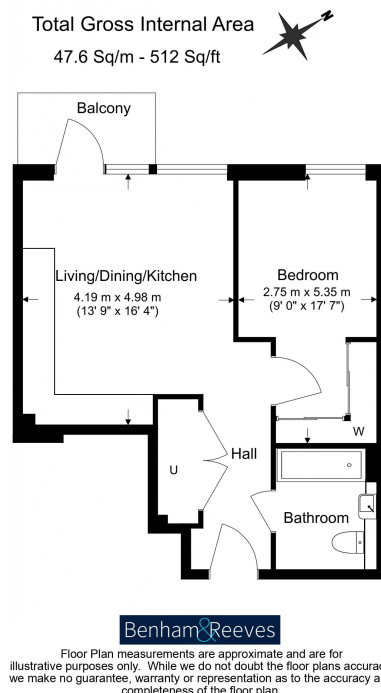
Benham&Reeves



New Warren Lane, Royal Arsenal Riverside, SE18

www.benhams.com

£485 per week, £2,100 per month + fees



Score	Energy rating	Current	Potential
92+	A		
81-91	B	86 B	86 B
69-80	C		
55-68	D		
39-54	E		
21-38	F		
1-20	G		

London branches open six days a week Mon - Sat

Canary Wharf | City | Colindale | Dartmouth Park | Ealing | Fulham
Hammersmith | Hampstead | Highgate | Hyde Park | Kensington | Kew
Knightsbridge | Nine Elms | Shoreditch | Southall | Surrey Quays
Wapping | Wembley | White City | Woolwich

International offices

China | Hong Kong SAR | India | Indonesia | Qatar | Malaysia | Middle East | Pakistan
Singapore | South Africa | Thailand | Turkey



Benham & Reeves