



Benham & Reeves

Rosemary Building, Royal Mint Street, E1

£520 per week, £2,253 per month + fees

 Studio  1 Bathroom  Furnished

Luxury studio apartment situated within a prestigious development in Aldgate. Located within a short walk into The City and minutes from the DLR and London Underground.

Please [click here](#) for full detail

Property features

Modern Studio Apartment | Open Plan Reception Area With Timber Floors | Bathroom With Bespoke Vanity Counter | Integrated Heating & Cooling System | Sleeping Area With Custom Fitted Wardrobe | EPC-B | 24 Hour Concierge Service | Residents Lounge with Reading Area | Cinema / Screening Room, Games / Recreation Room & Residents | Near Tower Hill Underground Station, Tower Gateway DLR

For more information about this property,
please call our Wapping branch on

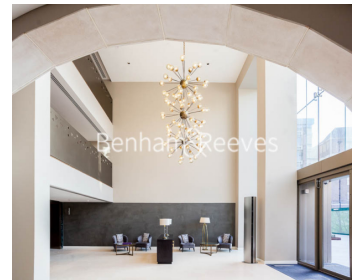
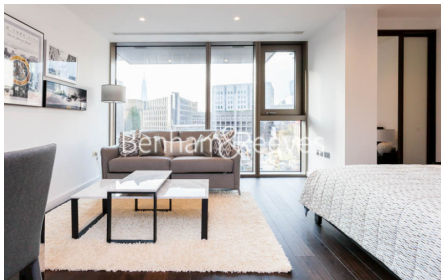
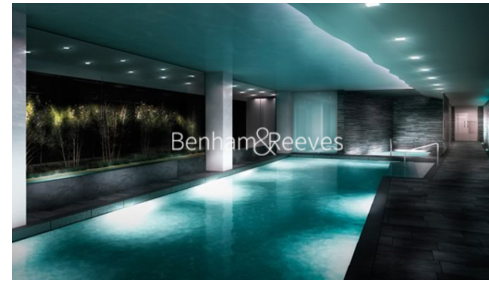
020 7680 8900

Redress & Client Money Protection :

Benham and Reeves are members of The Property Ombudsman redress scheme and have Client Money protection with ARLA Propertymark. You can find more information on our website at <https://www.benhamandreeves.com/membership/>



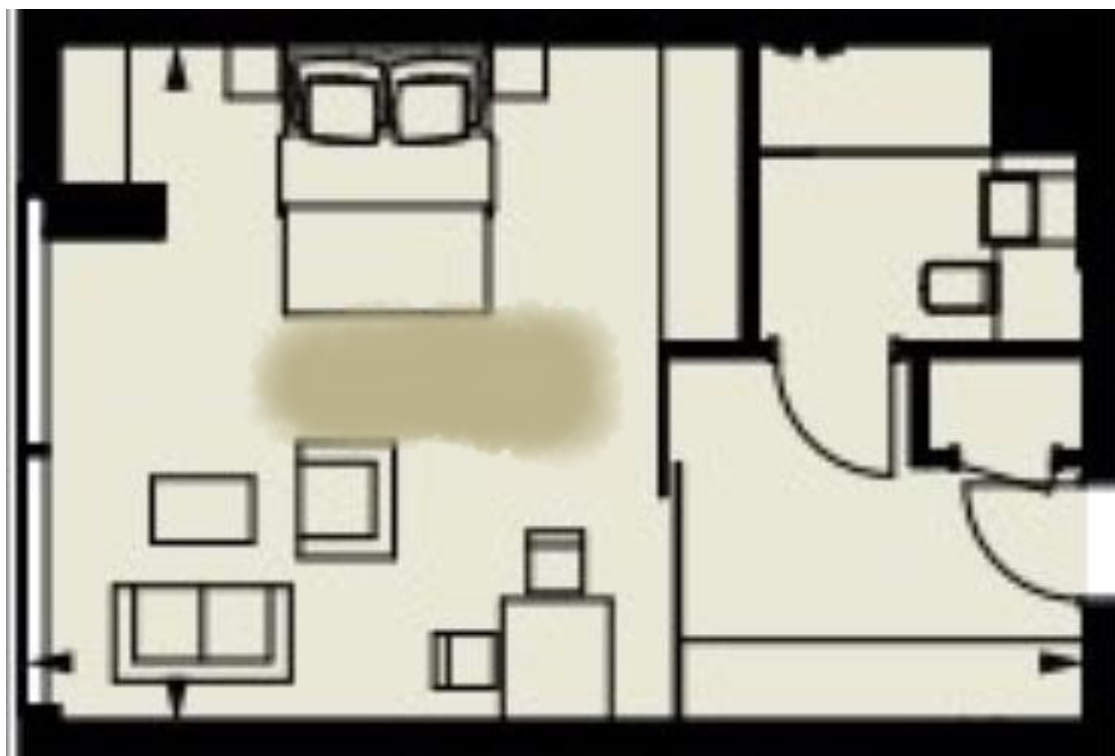
Benham & Reeves



Rosemary Building, Royal Mint Street, E1

£520 per week, £2,253 per month + fees

www.benhams.com



Energy Efficiency Rating

	Current	Potential
Very energy efficient - lower running costs		
(92 plus) A		
(81-91) B	84	84
(69-80) C		
(55-68) D		
(39-54) E		
(21-38) F		
(1-20) G		
Not energy efficient - higher running costs		

London branches open six days a week Mon - Sat

Canary Wharf | City | Colindale | Dartmouth Park | Ealing | Fulham
Hammersmith | Hampstead | Highgate | Hyde Park | Kensington | Kew
Knightsbridge | Nine Elms | Shoreditch | Southall | Surrey Quays
Wapping | Wembley | White City | Woolwich

International offices

China | Hong Kong SAR | India | Israel | Malaysia | Middle East | Pakistan
Qatar | Singapore | South Africa | Thailand | Turkey



Benham & Reeves