



Benham & Reeves

**Rosemary Place, Royal Mint Street, E1**

£650 per week, £2,817 per month + fees

 1 Bedroom     1 Bathroom     Furnished

Luxury apartment situated within a prestigious residential development with exclusive resident facilities in Tower Hill. Located within a short walk into The City and minutes from the DLR and London Underground

Please [click here](#) for full detail

## Property features

**Luxury One Bedroom Apartment | Open Plan Reception With Balcony | Fitted Kitchen With Fully Integrated Appliances | Double Bedroom With Built In Wardrobe | Bespoke Bathroom With Vanity Cabinet | EPC-B | Wood Floors, Full Length Windows, Air Cooling | Fully Equipped & Professionally Managed Apartment | Close To The City & Easy Reach Of Canary Wharf & The WestEnd | Short Walk To Tower Hill Underground & Tower Gateway DLR**

For more information about this property,  
please call our Wapping branch on

**020 7680 8900**

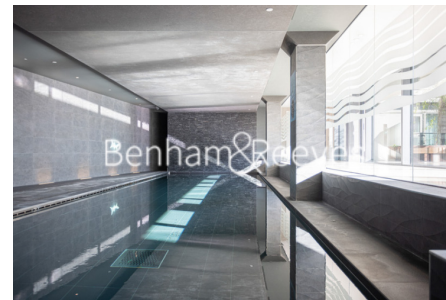
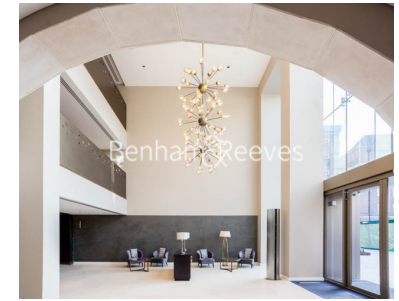
Redress & Client Money Protection :

Benham and Reeves are members of The Property Ombudsman redress scheme and have Client Money protection with ARLA Propertymark. You can find more information on our website at <https://www.benham.com/membership/>



**Benham & Reeves**





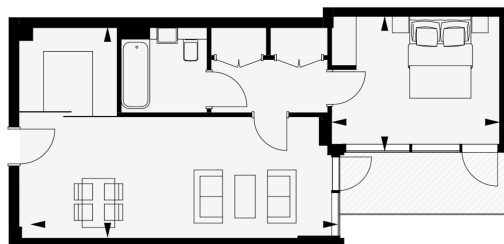
# Rosemary Place, Royal Mint Street, E1

£650 per week, £2,817 per month + fees

www.benhams.com

3rd Floor

Approx gross internal area: 564sq/ft - 52sq/m



Living/Dining 7.8m x 5.2m / 25'6" x 17'0"  
Master Bedroom 4.0m x 3.3m / 13'1" x 10'8"

Whilst every attempt has been made to ensure the accuracy of the floor plan contained here, measurements of doors, windows, rooms and any other items are approximate and no responsibility is taken for any error, omission, or mis-statement. This plan is for illustrative purposes only and should be used as such by any prospective purchaser. The services, systems and appliances shown have not been tested and no guarantee as to their operability or efficiency can be given.  
Made with Metropix ©2016

Score	Energy rating	Current	Potential
92+	A		
81-91	B	84 B	84 B
69-80	C		
55-68	D		
39-54	E		
21-38	F		
1-20	G		

## London branches open six days a week Mon - Sat

Canary Wharf | City | Colindale | Dartmouth Park | Ealing | Fulham  
Hammersmith | Hampstead | Highgate | Hyde Park | Kensington | Kew  
Knightsbridge | Nine Elms | Shoreditch | Southall | Surrey Quays  
Wapping | Wembley | White City | Woolwich

## International offices

China | Hong Kong SAR | India | Indonesia | Qatar | Malaysia | Middle East |  
Singapore | South Africa | Thailand | Turkey



Benham & Reeves