



Benham & Reeves

**Rosemary House, Samara Drive, UB1**

£473 per week, £2,050 per month + fees

🛏️ 2 Bedrooms    🚿 1 Bathroom    🛋️ Furnished

This stunning new 5th floor is situated in an outstanding biodiverse Berkeley development on the Western fringe of London featuring great views of the surrounding landscaped gardens. Southall Station (Zone 4), is a strategic stop on the new super-fast Elizabeth Line, is within a short walk.

Please [click here](#) for full detail

## Property features

2 bedroom | Concierge | Gym | Cinema Room | Residents Lounge | EPC- B | Balcony | Furnished | Underground Parking | Nearby Southall Station (Zone 4)

For more information about this property,  
please call our Southall branch on

**020 8051 0800**

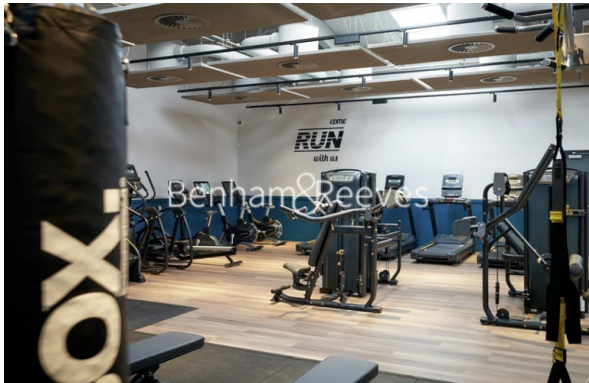
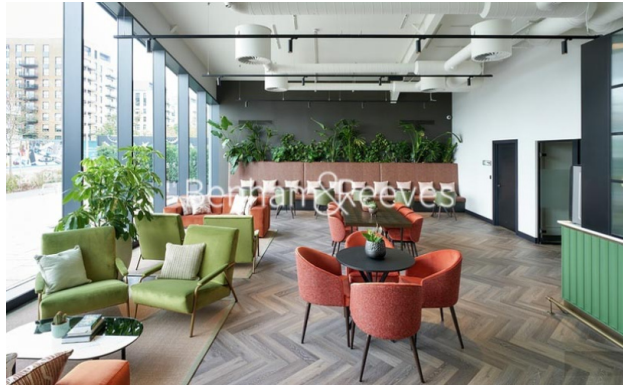
Redress & Client Money Protection :

Benham and Reeves are members of The Property Ombudsman redress scheme and have Client Money protection with ARLA Propertymark. You can find more information on our website at <https://www.benhamandreeves.com/membership/>



**Benham & Reeves**

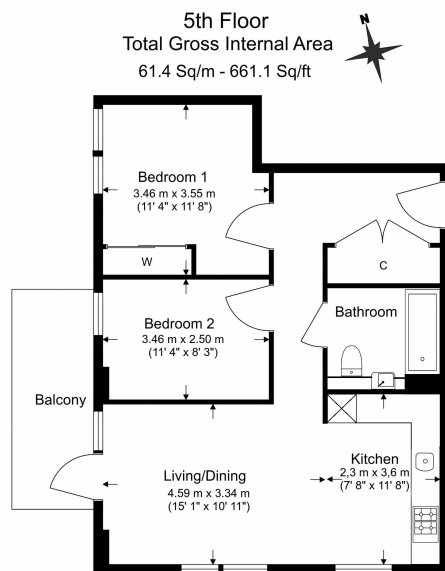




# Rosemary House, Samara Drive, UB1

£473 per week, £2,050 per month + fees

www.benhams.com



Benham & Reeves

Floor Plan measurements are approximate and are for illustrative purposes only. While we do not doubt the floor plans accuracy, we make no guarantee, warranty or representation as to the accuracy and completeness of the floor plan.

Score	Energy rating	Current	Potential
92+	A		
81-91	B	83 B	83 B
69-80	C		
55-68	D		
39-54	E		
21-38	F		
1-20	G		

## London branches open six days a week Mon - Sat

Canary Wharf | City | Colindale | Dartmouth Park | Ealing | Fulham  
Hammersmith | Hampstead | Highgate | Hyde Park | Kensington | Kew  
Knightsbridge | Nine Elms | Shoreditch | Southall | Surrey Quays  
Wapping | Wembley | White City | Woolwich

## International offices

China | Hong Kong SAR | India | Indonesia | Qatar | Malaysia | Middle East | Pakistan  
Singapore | South Africa | Thailand | Turkey



Benham & Reeves