



Benham & Reeves

Morton Close, Shadwell, E1

£340 per week, £1,473 per month + fees

 1 Bedroom  1 Bathroom  Furnished

Well-appointed and proportioned apartment set within a gated development in Shadwell. Good transport links to the City and Canary Wharf.

Please [click here](#) for full detail

Property features

One double bedroom | One Bathroom | Fitted Kitchen | Bright and Spacious | Fitted Kitchen | EPC-C | Gated development | Close Proximity to Amenities | Juliet Balcony | Nearby Shadwell Station (DLR & London Overground)

For more information about this property, please call our Wapping branch on

020 7680 8900



Redress & Client Money Protection :
Benham and Reeves are members of The Property Ombudsman redress scheme and have Client Money protection with ARLA Propertymark.
You can find more information on our website at <https://www.benhams.com/membership/>

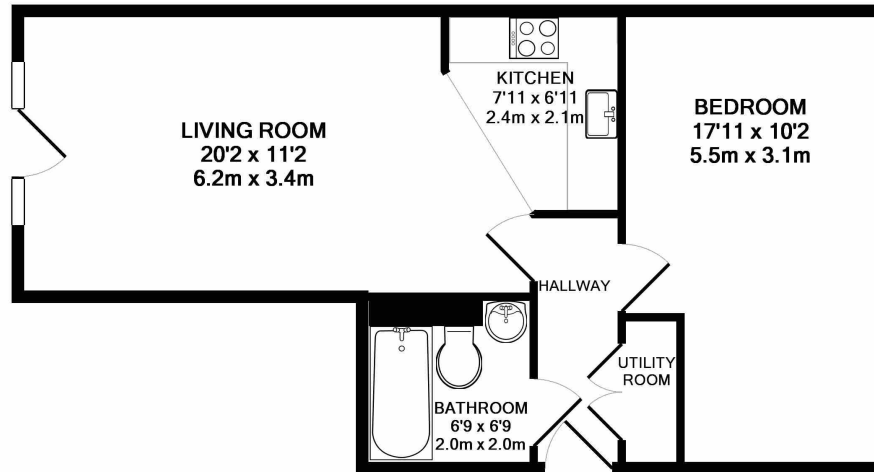
Benham & Reeves



Morton Close, Shadwell, E1

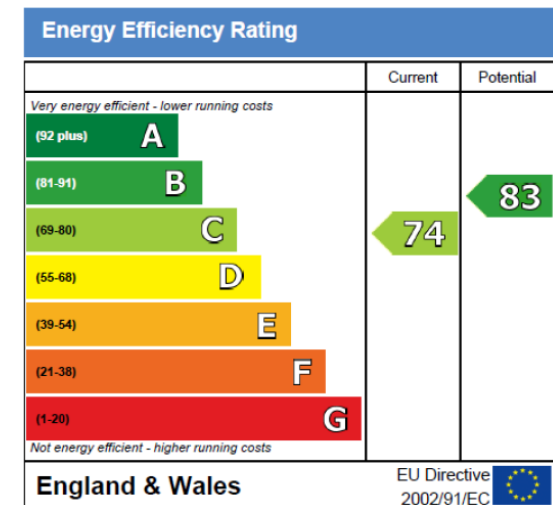
£340 per week, £1,473 per month + fees

www.benhams.com



TOTAL APPROX. FLOOR AREA 509 SQ.FT. (47.3 SQ.M.)

Whilst every attempt has been made to ensure the accuracy of the floor plan contained here, measurements of doors, windows, rooms and any other items are approximate and no responsibility is taken for any error, omission, or mis-statement. This plan is for illustrative purposes only and should be used as such by any prospective purchaser. The services, systems and appliances shown have not been tested and no guarantee as to their operability or efficiency can be given
Made with Metropix ©2018



London branches open six days a week Mon - Sat

Canary Wharf | City | Colindale | Dartmouth Park | Ealing | Fulham
Hammersmith | Hampstead | Highgate | Hyde Park | Kensington | Kew
Knightsbridge | Nine Elms | Shoreditch | Southall | Surrey Quays
Wapping | Wembley | White City | Woolwich



International offices

China | Hong Kong SAR | India | Indonesia | Qatar | Malaysia | Middle East |
Singapore | South Africa | Thailand | Turkey

Benham & Reeves