



Benham & Reeves

Diss Street, Shoreditch, E2

£427 per week, £1,850 per month + fees

 1 Bedroom  1 Bathroom  Part-furnished

Stylish apartment situated in a desirable portered block located a short distance from the amenities of Shoreditch and minutes from Hoxton Overground Station, Shoreditch High Street and Haggerston Overground Stations.

Please [click here](#) for full detail

Property features

**1 Bedroom | 1 Bathroom | Bespoke Open Plan Kitchens In Contemporary Design With High b |
Thermostatically Controlled Under Floor Heating | Part furnished | EPC-B | Lift | Video Entry
Phone And CCTV | Private Balcony Direct Access From The living Room | Hoxton Station/
Shoreditch High Street Station**

For more information about this property,
please call our Shoreditch branch on

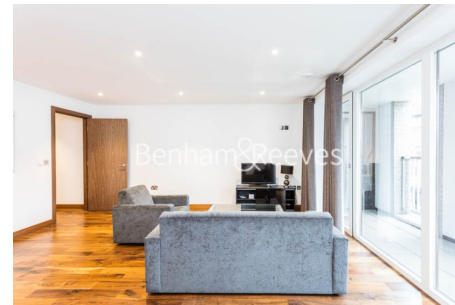
020 3868 5733

Redress & Client Money Protection :

Benham and Reeves are members of The Property Ombudsman redress scheme and have Client Money protection with ARLA Propertymark.
You can find more information on our website at <https://www.benhamandreeves.com/membership/>



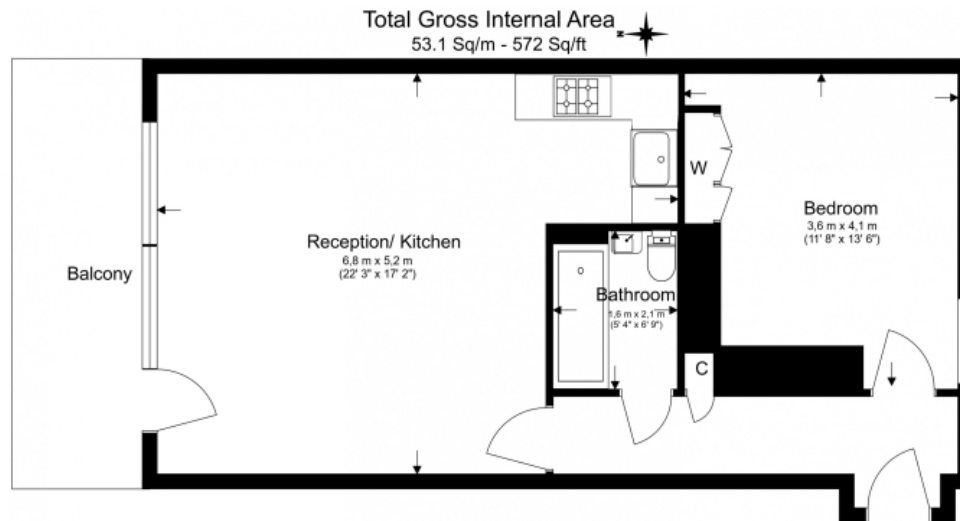
Benham & Reeves



Diss Street, Shoreditch, E2

£427 per week, £1,850 per month + fees

www.benhams.com



Floor Plan measurements are approximate and are for illustrative purposes only. While we do not doubt the floor plans accuracy, we make no guarantee, warranty or representation as to the accuracy and completeness of the floor plan.

Score	Energy rating	Current	Potential
92+	A		
81-91	B	84 B	84 B
69-80	C		
55-68	D		
39-54	E		
21-38	F		
1-20	G		

London branches open six days a week Mon - Sat

Canary Wharf | City | Colindale | Dartmouth Park | Ealing | Fulham
Hammersmith | Hampstead | Highgate | Hyde Park | Kensington | Kew
Knightsbridge | Nine Elms | Shoreditch | Southall | Surrey Quays
Wapping | Wembley | White City | Woolwich

International offices

China | Hong Kong SAR | India | Indonesia | Qatar | Malaysia | Middle East | Pakistan
Singapore | South Africa | Thailand | Turkey



Benham & Reeves