



Benham & Reeves

Gorsuch Place, Shoreditch, E2

£808 per week, £3,500 per month + fees

 2 Bedrooms  2 Bathrooms  Furnished

A modern stylish apartment situated within an exciting development in one of London's most creatively dynamic and culturally vibrant Boroughs. Moments from Hoxton Station and a short walk from Liverpool Street.

Please [click here](#) for full detail

Property features

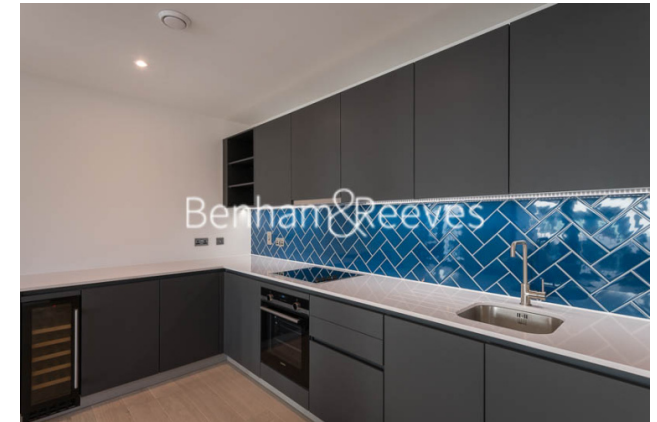
2 bedrooms 2 Bathrooms over 866sqft | Brand new development at the heart of Shoreditch | Open plan fitted kitchen with high brand appliances | Spacious Private Balcony direct access from the living room | Furnished | EPC-B | 24 Hour Concierge, Lift, Gym, Private Cinema | Underfloor heating/ HIU constant hot water | Short walking distance to Shoreditch High Street | Hoxton station/ Shoreditch High Street Station

For more information about this property, please call our Shoreditch branch on

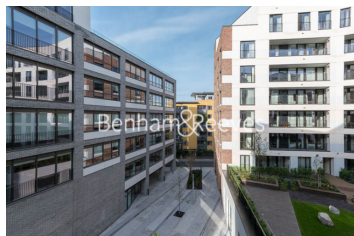
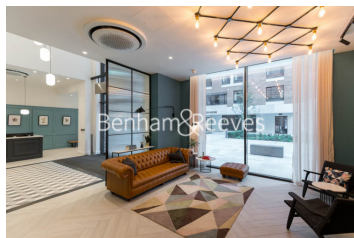
020 3868 5733

Redress & Client Money Protection :

Benham and Reeves are members of The Property Ombudsman redress scheme and have Client Money protection with ARLA Propertymark. You can find more information on our website at <https://www.benhamandreeves.com/membership/>



Benham & Reeves

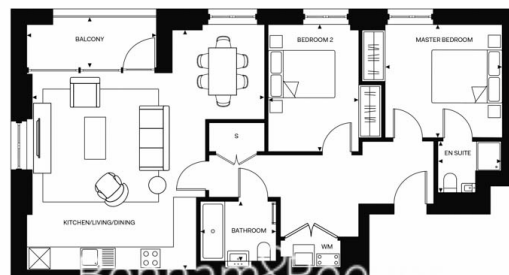


Gorsuch Place, Shoreditch, E2

£808 per week, £3,500 per month + fees

www.benhams.com

3rd Floor

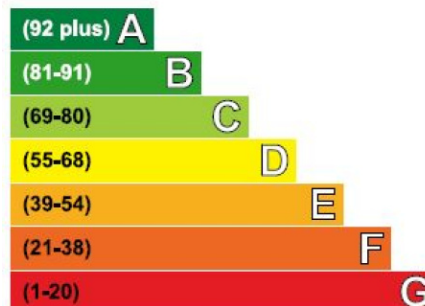


TOTAL INTERNAL AREA	80.45 sq m	866 sq ft
LIVING/DINING/KITCHEN	6.83 x 6.76 m	22' 5" x 22' 2" ft
MASTER BEDROOM	3.22 x 3.32 m	10' 7" x 10' 11" ft
BEDROOM 2	3.61 x 2.58 m	11' 10 1/2" x 8' 5" ft
BATHROOM	1.7 x 2.15 m	5' 7" x 7' 1" ft
TOTAL EXTERNAL AREA	5.56 sq m	60 sq ft
BALCONY	1.44 x 3.68 m	4' 8 1/2" x 12' 1" ft

Whilst every attempt has been made to ensure the accuracy of the floor plan contained here, measurements of doors, windows, rooms and any other items are approximate and no responsibility is taken for any error, omission, or mis-statement. This plan is for illustrative purposes only and should be used as such by any prospective purchaser. The services, systems and appliances shown have not been tested and no guarantee as to their operability or efficiency can be given.
Made with Metropix ©2016

Energy Efficiency Rating

Very energy efficient - lower running costs



Not energy efficient - higher running costs

London branches open six days a week Mon - Sat

Canary Wharf | City | Colindale | Dartmouth Park | Ealing | Fulham
Hammersmith | Hampstead | Highgate | Hyde Park | Kensington | Kew
Knightsbridge | Nine Elms | Shoreditch | Southall | Surrey Quays
Wapping | Wembley | White City | Woolwich

International offices

China | Hong Kong SAR | India | Indonesia | Qatar | Malaysia | Middle East |
Singapore | South Africa | Thailand | Turkey



Benham & Reeves