



Benham&Reeves

Esther Anne Place, Shoreditch, N1

£762 per week, £3,300 per month + fees

🛏 1 Bedroom 🚿 1 Bathroom 🛋 Furnished

A beautiful and spacious apartment situated within a prestigious development in the heart of vibrant Islington, 1.1 miles from Old Street Underground.

Please [click here](#) for full detail

Property features

Spacious 635sqft 1bed 1bath apartment , Wooden flooring thr | New development at the heart of Islington | Open plan fully equipped modern fitted kitchen, with dishwas | Spacious living room with overlooking communal garden | Beautifully designed modern bathroom with bath tub and rainf | EPC-C | Spacious bedroom with ample storage with floor to ceiling wa | Washer Dryer, ventilation system, High speed broadband netwo | Underfloor heating, Hot Water provided by the Heat Interface | Close to all shops, restaurants, bars in Islington High Stre

For more information about this property,
please call our Shoreditch branch on

020 3868 5733

Redress & Client Money Protection :

Benham and Reeves are members of The Property Ombudsman redress scheme and have Client Money protection with ARLA Propertymark. You can find more information on our website at <https://www.benhamandreeves.com/membership/>



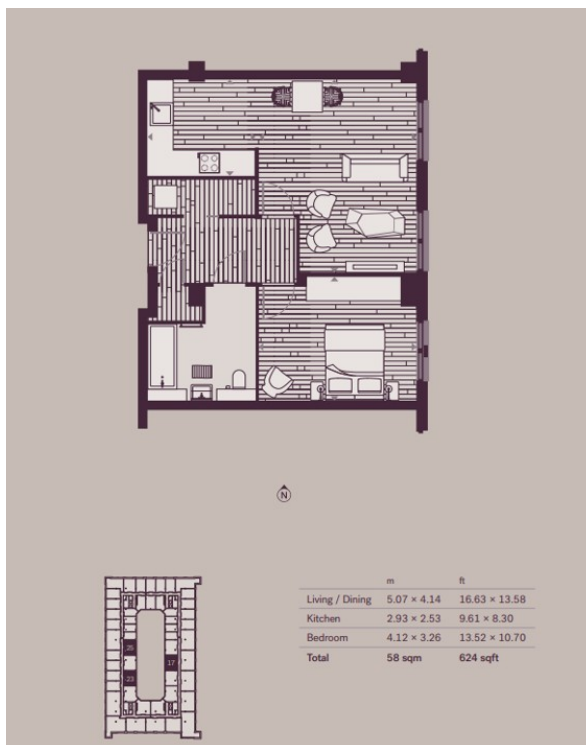
Benham & Reeves



Esther Anne Place, Shoreditch, N1

£762 per week, £3,300 per month + fees

www.benhams.com



Score	Energy rating	Current	Potential
92+	A		
81-91	B		
69-80	C	79 C	79 C
55-68	D		
39-54	E		
21-38	F		
1-20	G		

London branches open six days a week Mon - Sat

Canary Wharf | City | Colindale | Dartmouth Park | Ealing | Fulham
Hammersmith | Hampstead | Highgate | Hyde Park | Kensington | Kew
Knightsbridge | Nine Elms | Shoreditch | Southall | Surrey Quays
Wapping | Wembley | White City | Woolwich

International offices

China | Hong Kong SAR | India | Indonesia | Qatar | Malaysia | Middle East |
Singapore | South Africa | Thailand | Turkey



Benham & Reeves