



Benham & Reeves

**Nell Gwynn House, Sloane Avenue, Chelsea, SW3**

£595 per week, £2,578 per month + fees

 1 Bedroom    1 Bathroom    Furnished

A smartly-presented 368 sq ft ONE-BEDROOM apartment in NELL GWYNN HOUSE - a popular building in the heart of CHELSEA near the KING'S ROAD & SLOANE SQUARE. The property is within walking distance of SOUTH KENSINGTON STATION. Rent includes HOT WATER & HEATING.

Please [click here](#) for full detail

## Property features

**1 Bedroom | 1 Bathroom | Reception | Fully-Furnished | Fully-Fitted Kitchen | EPC-C | 24 Hr Concierge | Hot Water & Heating Included | Nearby South Kensington Tube Station**

For more information about this property,  
please call our Knightsbridge branch on

**020 7581 2112**

Redress & Client Money Protection :

Benham and Reeves are members of The Property Ombudsman redress scheme and have Client Money protection with ARLA Propertymark. You can find more information on our website at <https://www.benhams.com/membership/>



**Benham & Reeves**

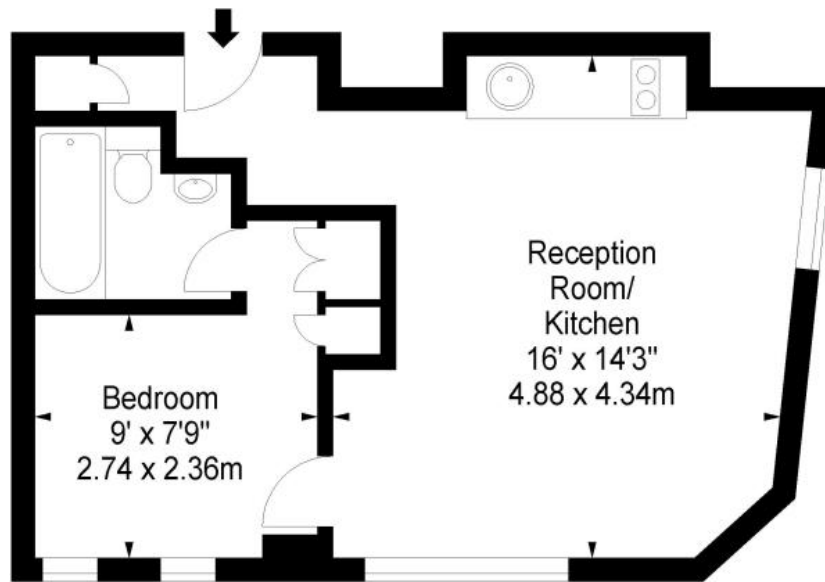


# Nell Gwynn House, Sloane Avenue, Chelsea, SW3

www.benhams.com

£595 per week, £2,578 per month + fees

Approx. Gross Internal Area  
368 Sq Ft - 34.19 Sq M



Ground Floor

Energy Efficiency Rating		
	Current	Potential
<i>Very energy efficient - lower running costs</i>		
(92 plus) <b>A</b>		
(81-91) <b>B</b>		
(69-80) <b>C</b>	69	70
(55-68) <b>D</b>		
(39-54) <b>E</b>		
(21-38) <b>F</b>		
(1-20) <b>G</b>		
<i>Not energy efficient - higher running costs</i>		
<b>England &amp; Wales</b>	EU Directive 2002/91/EC	

## London branches open six days a week Mon - Sat

Canary Wharf | City | Colindale | Dartmouth Park | Ealing | Fulham  
Hammersmith | Hampstead | Highgate | Hyde Park | Kensington | Kew  
Knightsbridge | Nine Elms | Shoreditch | Southall | Surrey Quays  
Wapping | Wembley | White City | Woolwich

## International offices

China | Hong Kong SAR | India | Indonesia | Qatar | Malaysia | Middle East |  
Singapore | South Africa | Thailand | Turkey



Benham & Reeves