



Benham & Reeves

Memorial Avenue, Slough, SL1

£312 per week, £1,352 per month + fees

 1 Bedroom  1 Bathroom  Furnished

This Stunning apartment is situated in an outstanding Berkeley development in Slough, within the Royal county of Berkshire. Perfectly located for the amenities of Slough and within walking distance of Slough British Rail Station (with fast links to London Heathrow & Paddington).

Please [click here](#) for full detail

Property features

Well-Equipped Kitchen | Concierge | Shared workspace/meeting area | Balcony | Wood Floors | EPC-B | Furnished | Full Height Windows | Nearby Slough British Rail Station

For more information about this property,
please call our Ealing branch on

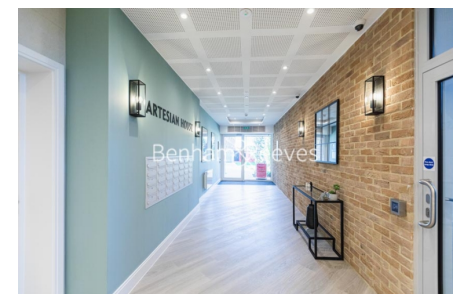
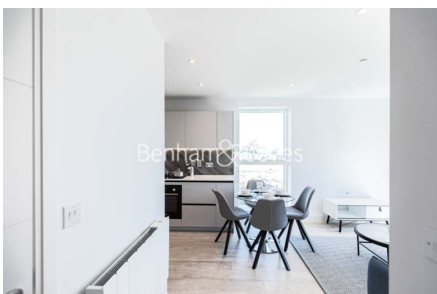
020 8280 0140

Redress & Client Money Protection :

Benham and Reeves are members of The Property Ombudsman redress scheme and have Client Money protection with ARLA Propertymark. You can find more information on our website at <https://www.benhams.com/membership/>



Benham & Reeves

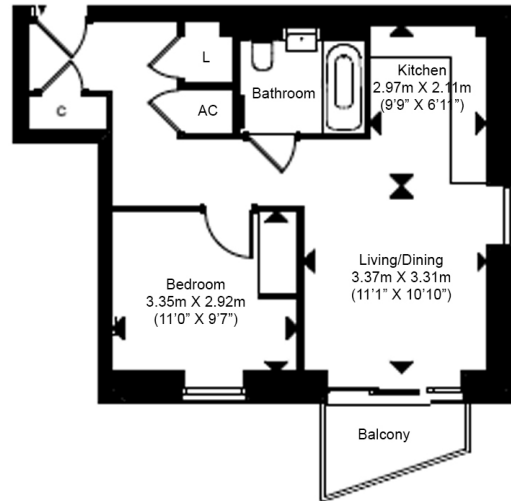


Memorial Avenue, Slough, SL1

£312 per week, £1,352 per month + fees

www.benhams.com

Total Gross Internal Area
48 Sq/m - 521 Sq/ft



Floor Plan measurements are approximate and are for illustrative purposes only. While we do not doubt the floor plans accuracy, we make no guarantee, warranty or representation as to the accuracy and completeness of the floor plan.

Score	Energy rating	Current	Potential
92+	A		
81-91	B	81 B	81 B
69-80	C		
55-68	D		
39-54	E		
21-38	F		
1-20	G		

London branches open six days a week Mon - Sat

Canary Wharf | City | Colindale | Dartmouth Park | Ealing | Fulham
Hammersmith | Hampstead | Highgate | Hyde Park | Kensington | Kew
Knightsbridge | Nine Elms | Shoreditch | Southall | Surrey Quays
Wapping | Wembley | White City | Woolwich

International offices

China | Hong Kong SAR | India | Indonesia | Qatar | Malaysia | Middle East |
Singapore | South Africa | Thailand | Turkey

