



Benham & Reeves

Memorial Avenue, Slough, SL1

£312 per week, £1,352 per month + fees

 1 Bedroom  1 Bathroom  Furnished

Stunning ground floor apartment, with shared workspace/meeting area, situated in an outstanding new Berkeley development in Slough in the Royal county of Berkshire. Ideally located for Slough amenities and Slough British Rail Station.

Please [click here](#) for full detail

Property features

Brand new | Concierge | Shared workspace/meeting area | Balcony | Wood floors | EPC-C | Well-Equipped Kitchen | Full Height Windows | Nearby Slough Amenities | Nearby Slough British Rail Station

For more information about this property,
please call our Ealing branch on

020 8280 0140

Redress & Client Money Protection :

Benham and Reeves are members of The Property Ombudsman redress scheme and have Client Money protection with ARLA Propertymark. You can find more information on our website at <https://www.benhams.com/membership/>



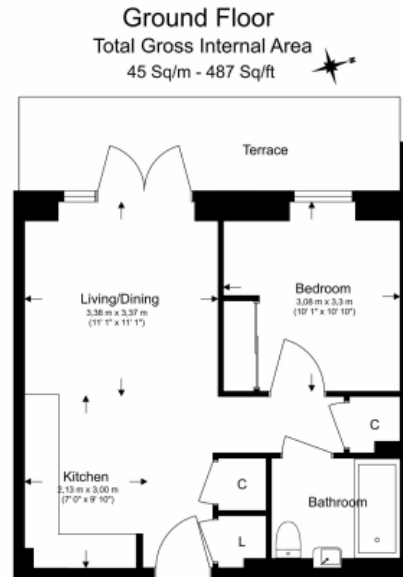
Benham & Reeves



Memorial Avenue, Slough, SL1

£312 per week, £1,352 per month + fees

www.benhams.com



Floor Plan measurements are approximate and are for illustrative purposes only. While we do not doubt the floor plans accuracy, we make no guarantee, warranty or representation as to the accuracy and completeness of the floor plan.

Score	Energy rating	Current	Potential
92+	A		
81-91	B		
69-80	C	74 c	74 c
55-68	D		
39-54	E		
21-38	F		
1-20	G		

London branches open six days a week Mon - Sat

Canary Wharf | City | Colindale | Dartmouth Park | Ealing | Fulham
Hammersmith | Hampstead | Highgate | Hyde Park | Kensington | Kew
Knightsbridge | Nine Elms | Shoreditch | Southall | Surrey Quays
Wapping | Wembley | White City | Woolwich

International offices

China | Hong Kong SAR | India | Israel | Malaysia | Middle East | Pakistan
Qatar | Singapore | South Africa | Thailand | Turkey



Benham & Reeves