



Benham & Reeves

Memorial Avenue, Slough, SL1

£335 per week, £1,452 per month + fees

🛏 1 Bedroom 🚿 1 Bathroom 🚗 Furnished

This stunning apartment is situated in an outstanding Berkeley development in Slough, within the Royal County of Berkshire. Perfectly located for the amenities of Slough and within walking distance of Slough Station (Elizabeth line).

Please [click here](#) for full detail

Property features

Concierge | Gym | Cinema room | Residents lounge | Roof terrace | EPC-B | Furnished | Work space | Near Slough Station

For more information about this property,
please call our Southall branch on

020 8154 1089

Redress & Client Money Protection :

Benham and Reeves are members of The Property Ombudsman redress scheme and have Client Money protection with ARLA Propertymark. You can find more information on our website at <https://www.benhams.com/membership/>



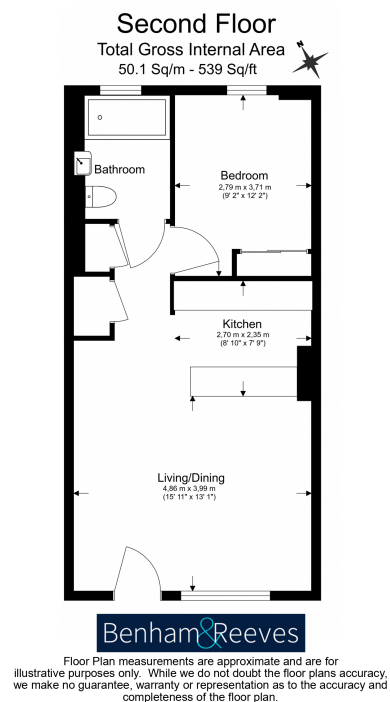
Benham&Reeves



Memorial Avenue, Slough, SL1

£335 per week, £1,452 per month + fees

www.benhams.com



Score	Energy rating	Current	Potential
92+	A		
81-91	B	86 B	86 B
69-80	C		
55-68	D		
39-54	E		
21-38	F		
1-20	G		

London branches open six days a week Mon - Sat

Canary Wharf | City | Colindale | Dartmouth Park | Ealing | Fulham
Hammersmith | Hampstead | Highgate | Hyde Park | Kensington | Kew
Knightsbridge | Nine Elms | Shoreditch | Southall | Surrey Quays
Wapping | Wembley | White City | Woolwich

International offices

China | Hong Kong SAR | India | Indonesia | Qatar | Malaysia | Middle East |
Singapore | South Africa | Thailand | Turkey



Benham & Reeves