



Benham & Reeves

## **Memorial Avenue, Slough, SL1**

£335 per week, £1,452 per month + fees

 1 Bedroom     1 Bathroom     Furnished

This 2nd floor apartment is situated in an outstanding Berkeley development in Slough, within the Royal County of Berkshire. Perfectly located for the amenities of Slough and within walking distance of Slough Station (Elizabeth line).

Please [click here](#) for full detail

## Property features

**Concierge | Gym | Cinema room | Residents lounge | Roof terrace | EPC-B | Work space | Furnished | Well-equipped kitchen | Slough Station (Elizabeth line)**

For more information about this property,  
please call our Southall branch on

**020 8154 1089**

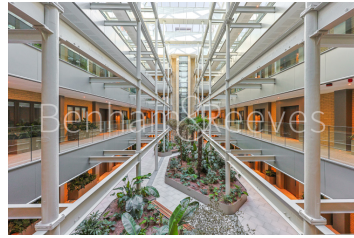
Redress & Client Money Protection :

Benham and Reeves are members of The Property Ombudsman redress scheme and have Client Money protection with ARLA Propertymark. You can find more information on our website at <https://www.benhamandreeves.com/membership/>



**Benham&Reeves**

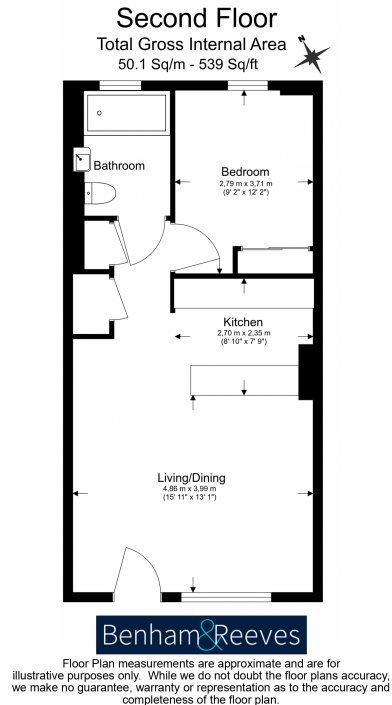




# Memorial Avenue, Slough, SL1

£335 per week, £1,452 per month + fees

www.benhams.com



Score	Energy rating	Current	Potential
92+	A		
81-91	B	86 B	86 B
69-80	C		
55-68	D		
39-54	E		
21-38	F		
1-20	G		

## London branches open six days a week Mon - Sat

Canary Wharf | City | Colindale | Dartmouth Park | Ealing | Fulham  
Hammersmith | Hampstead | Highgate | Hyde Park | Kensington | Kew  
Knightsbridge | Nine Elms | Shoreditch | Southall | Surrey Quays  
Wapping | Wembley | White City | Woolwich

## International offices

China | Hong Kong SAR | India | Indonesia | Qatar | Malaysia | Middle East |  
Singapore | South Africa | Thailand | Turkey



**Benham & Reeves**