



Benham & Reeves

Memorial Avenue, Slough, SL1

£335 per week, £1,452 per month + fees

 1 Bedroom  1 Bathroom  Furnished

This superb apartment is situated in an outstanding Berkeley development in Slough, within the Royal County of Berkshire. Perfectly located for the amenities of Slough and within walking distance of Slough Station (Elizabeth line).

Please [click here](#) for full detail

Property features

1 Bedroom | Bathrooms | Reception | Concierge | Cinema room | EPC-C | Balcony | Gym | Slough Station (Elizabeth line)

For more information about this property,
please call our Southall branch on

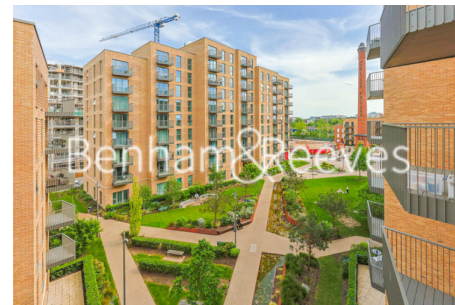
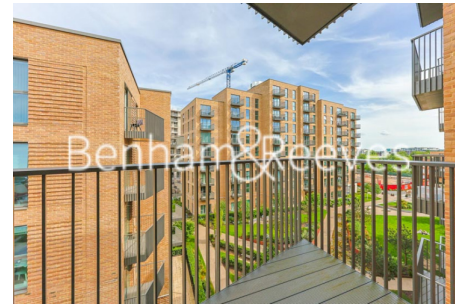
020 8051 0800

Redress & Client Money Protection :

Benham and Reeves are members of The Property Ombudsman redress scheme and have Client Money protection with ARLA Propertymark. You can find more information on our website at <https://www.benhamandreeves.com/membership/>



Benham&Reeves

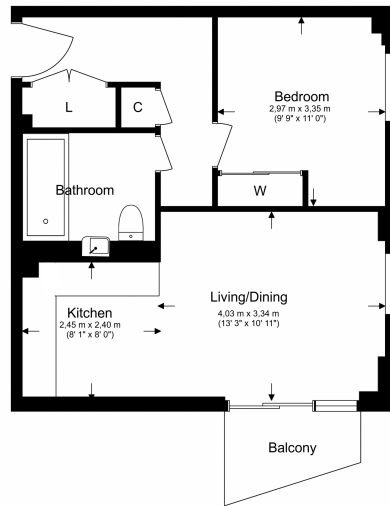


Memorial Avenue, Slough, SL1

£335 per week, £1,452 per month + fees

www.benhams.com

Total Gross Internal Area
46 Sq/m - 496 Sq/ft



Benham & Reeves

Floor Plan measurements are approximate and are for illustrative purposes only. While we do not doubt the floor plans accuracy, we make no guarantee, warranty or representation as to the accuracy and completeness of the floor plan.

Score	Energy rating	Current	Potential
92+	A		
81-91	B		
69-80	C	79 C	79 C
55-68	D		
39-54	E		
21-38	F		
1-20	G		

London branches open six days a week Mon - Sat

Canary Wharf | City | Colindale | Dartmouth Park | Ealing | Fulham
Hammersmith | Hampstead | Highgate | Hyde Park | Kensington | Kew
Knightsbridge | Nine Elms | Shoreditch | Southall | Surrey Quays
Wapping | Wembley | White City | Woolwich

International offices

China | Hong Kong SAR | India | Indonesia | Qatar | Malaysia | Middle East | Pakistan
Singapore | South Africa | Thailand | Turkey



Benham & Reeves