



Benham & Reeves

Memorial Avenue, Slough, SL1

£266 per week, £1,153 per month + fees

 1 Bedroom  1 Bathroom  Furnished

Brand-new Stunning apartment is situated in an outstanding new Berkeley development close to the amenities of Slough in the Royal county of Berkshire. Located a short walk from Slough British Rail Station (with fast links to London Heathrow & Paddington).

Please [click here](#) for full detail

Property features

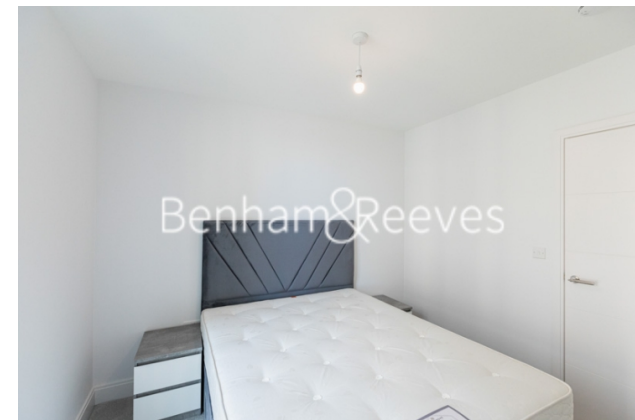
Brand new | Concierge | Shared workspace/meeting area | Balcony | Wood floors | EPC-B | Open Plan Design | Well-Equipped Kitchen | Nearby Slough British Rail Station

For more information about this property,
please call our Ealing branch on

020 8280 0140

Redress & Client Money Protection :

Benham and Reeves are members of The Property Ombudsman redress scheme and have Client Money protection with ARLA Propertymark. You can find more information on our website at <https://www.benhamandreeves.com/membership/>



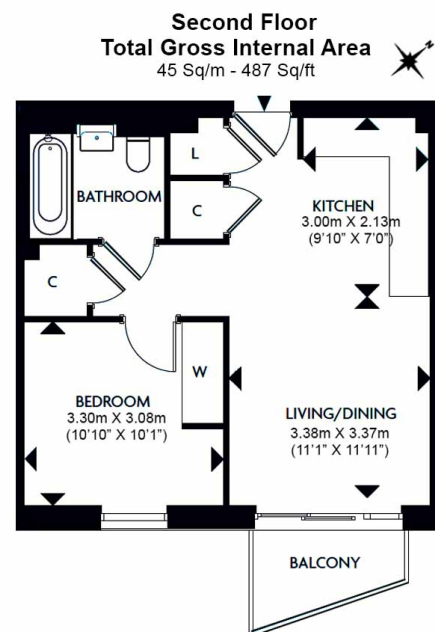
Benham&Reeves



Memorial Avenue, Slough, SL1

£266 per week, £1,153 per month + fees

www.benhams.com



Floor Plan measurements are approximate and are for illustrative purposes only. While we do not doubt the floor plans accuracy, we make no guarantee, warranty or representation as to the accuracy and completeness of the floor plan.

Score	Energy rating	Current	Potential
92+	A		
81-91	B	82 B	82 B
69-80	C		
55-68	D		
39-54	E		
21-38	F		
1-20	G		

London branches open six days a week Mon - Sat

Canary Wharf | City | Colindale | Dartmouth Park | Ealing | Fulham
Hammersmith | Hampstead | Highgate | Hyde Park | Kensington | Kew
Knightsbridge | Nine Elms | Shoreditch | Southall | Surrey Quays
Wapping | Wembley | White City | Woolwich

International offices

China | Hong Kong SAR | India | Indonesia | Qatar | Malaysia | Middle East |
Singapore | South Africa | Thailand | Turkey



Benham & Reeves