



Benham & Reeves

**Atar House, South Bermondsey, SE16**

£553 per week, £2,396 per month + fees

 1 Bedroom    1 Bathroom    Furnished

SHORT LET - lovely spacious fully equipped 4TH floor apartment situated in a residential area within proximity to South Bermondsey trainline.

Please [click here](#) for full detail

## Property features

Short let | All Bills Included | Gas Central Heating | Modern Kitchen | Modern Bathroom | EPC-A | Light and Airy | Balcony | Nearby South Bermondsey station

For more information about this property, please call our Surrey Quays branch on

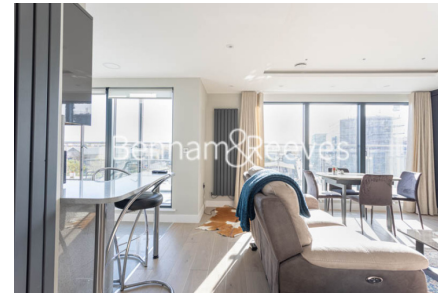
**020 7740 3050**

Redress & Client Money Protection :

Benham and Reeves are members of The Property Ombudsman redress scheme and have Client Money protection with ARLA Propertymark. You can find more information on our website at <https://www.benhams.com/membership/>



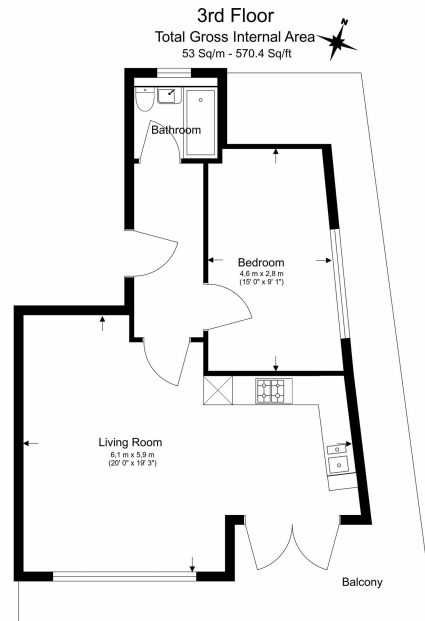
Benham & Reeves



# Atar House, South Bermondsey, SE16

£553 per week, £2,396 per month + fees

www.benhams.com



Floor Plan measurements are approximate and are for illustrative purposes only. While we do not doubt the floor plans accuracy, we make no guarantee, warranty or representation as to the accuracy and completeness of the floor plan.

Score	Energy rating	Current	Potential
92+	A	103   A	103   A
81-91	B		
69-80	C		
55-68	D		
39-54	E		
21-38	F		
1-20	G		

## London branches open six days a week Mon - Sat

Canary Wharf | City | Colindale | Dartmouth Park | Ealing | Fulham  
Hammersmith | Hampstead | Highgate | Hyde Park | Kensington | Kew  
Knightsbridge | Nine Elms | Shoreditch | Southall | Surrey Quays  
Wapping | Wembley | White City | Woolwich

## International offices

China | Hong Kong SAR | India | Indonesia | Qatar | Malaysia | Middle East |  
Singapore | South Africa | Thailand | Turkey

