



Benham & Reeves

St. George's Court, South Kensington, SW3

£925 per week, £4,008 per month + fees

 2 Bedrooms  1 Bathroom  Furnished

A stylish 754 sq ft TWO-BEDROOM apartment situated in a quiet position within ST. GEORGE'S COURT in Brompton Cross, which is surrounded by a variety of boutiques & restaurants. Rent includes HOT WATER & HEATING.

Please [click here](#) for full detail

Property features

2 Bedrooms | 1 Bathroom | Reception | Fully-Fitted Kitchen | Furnished | EPC- C | Hot Water & Heating Included | Porter | Lift | Close to Shops & Cafes

For more information about this property,
please call our Knightsbridge branch on

020 7581 2112

Redress & Client Money Protection :

Benham and Reeves are members of The Property Ombudsman redress scheme and have Client Money protection with ARLA Propertymark. You can find more information on our website at <https://www.benhamandreeves.com/membership/>



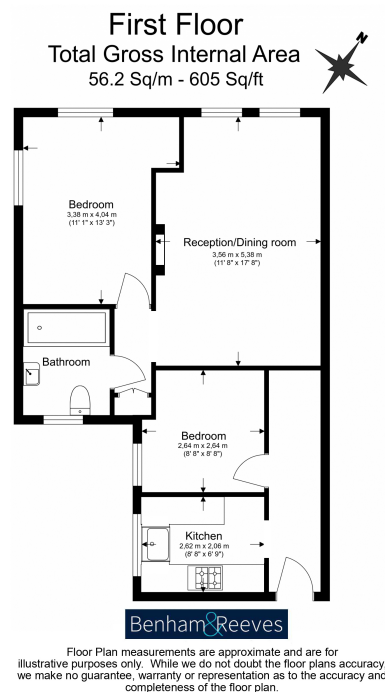
Benham&Reeves



St. George's Court, South Kensington, SW3

£925 per week, £4,008 per month + fees

www.benhams.com



Score	Energy rating	Current	Potential
92+	A		
81-91	B		
69-80	C	74 C	79 C
55-68	D		
39-54	E		
21-38	F		
1-20	G		

London branches open six days a week Mon - Sat

Canary Wharf | City | Colindale | Dartmouth Park | Ealing | Fulham
Hammersmith | Hampstead | Highgate | Hyde Park | Kensington | Kew
Knightsbridge | Nine Elms | Shoreditch | Southall | Surrey Quays
Wapping | Wembley | White City | Woolwich

International offices

China | Hong Kong SAR | India | Indonesia | Qatar | Malaysia | Middle East |
Singapore | South Africa | Thailand | Turkey



Benham & Reeves