



Benham & Reeves

St. George's Court, South Kensington, SW3

£840 per week, £3,640 per month + fees

🛏️ 2 Bedrooms 🚿 1 Bathroom 🚗 Furnished

A stylish 646 sq ft TWO-BEDROOM apartment situated in a quiet position within ST. GEORGE'S COURT in Brompton Cross, which is surrounded by a variety of boutiques & restaurants. Rent includes HOT WATER & HEATING.

Please [click here](#) for full detail

Property features

2 Bedrooms | 1 Bathroom | Reception | Separate Fully-Fitted Kitchen | Furnished | EPC- C | Porter | Hot Water & Heating Included | Close to Shops, Cafes | South Kensington Underground Station

For more information about this property, please call our Knightsbridge branch on

020 7581 2112

Redress & Client Money Protection :

Benham and Reeves are members of The Property Ombudsman redress scheme and have Client Money protection with ARLA Propertymark. You can find more information on our website at <https://www.benhams.com/membership/>



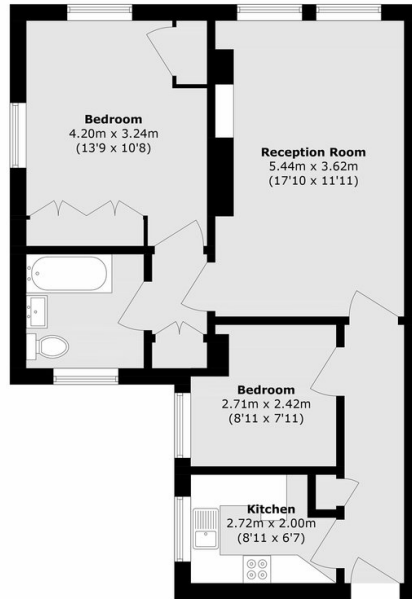
Benham & Reeves



St. George's Court, South Kensington, SW3

£840 per week, £3,640 per month + fees

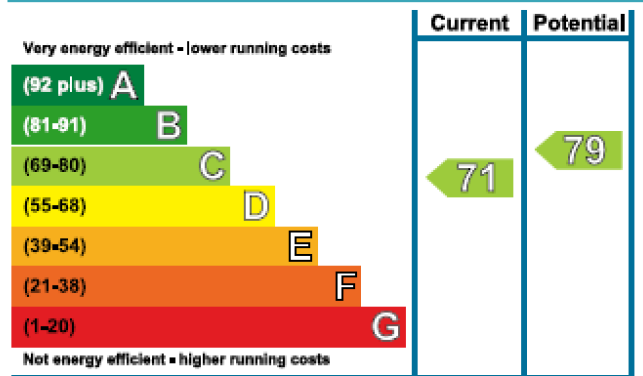
www.benhams.com



Second Floor

Total area (approx.): 60.1 sq. m (646.9 sq. ft)

Energy Efficiency Rating



London branches open six days a week Mon - Sat

Canary Wharf | City | Colindale | Dartmouth Park | Ealing | Fulham
 Hammersmith | Hampstead | Highgate | Hyde Park | Kensington | Kew
 Knightsbridge | Nine Elms | Shoreditch | Southall | Surrey Quays
 Wapping | Wembley | White City | Woolwich

International offices

China | Hong Kong SAR | India | Indonesia | Qatar | Malaysia | Middle East |
 Singapore | South Africa | Thailand | Turkey

