



Benham & Reeves

Cranley Gardens, South Kensington SW7

£2,500 per week, £10,833 per month + fees

🛏️ 3 Bedrooms 🚿 3 Bathrooms 🛋️ Furnished

An exceptional 1,703 sq ft THREE-BEDROOM Maisonette in CRANLEY GARDENS with stunning original features, a private TERRACE linked by a spiral staircase to a private PATIO and access to exclusive communal GARDENS within the heart of SOUTH KENSINGTON.

Please [click here](#) for full detail

Property features

Luxury Maisonette | 3 Beds / 3 Baths | Private Terrace & Patio | Furnished | 1,703 sq ft | EPC-C | Stunning Communal Gardens | Southwest Facing | Nearby South Kensington | Easy Access to Chelsea and Knightsbridge

For more information about this property, please call our Knightsbridge branch on

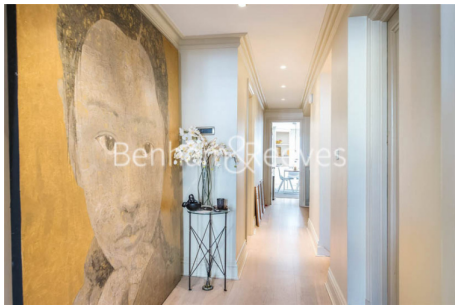
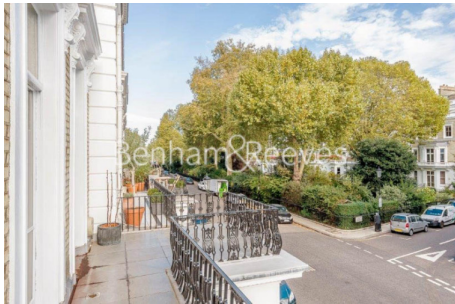
020 7581 2112

Redress & Client Money Protection :

Benham and Reeves are members of The Property Ombudsman redress scheme and have Client Money protection with ARLA Propertymark. You can find more information on our website at <https://www.benhams.com/membership/>



Benham & Reeves



Cranley Gardens, South Kensington SW7

£2,500 per week, £10,833 per month + fees

www.benhams.com



Floor Plan measurements are approximate and are for illustrative purposes only. While we do not doubt the floor plans accuracy, we make no guarantee, warranty or representation as to the accuracy and completeness of the floor plan.

Score	Energy rating	Current	Potential
92+	A		
81-91	B		82 B
69-80	C	71 C	
55-68	D		
39-54	E		
21-38	F		
1-20	G		

London branches open six days a week Mon - Sat

Canary Wharf | City | Colindale | Dartmouth Park | Ealing | Fulham
 Hammersmith | Hampstead | Highgate | Hyde Park | Kensington | Kew
 Knightsbridge | Nine Elms | Shoreditch | Southall | Surrey Quays
 Wapping | Wembley | White City | Woolwich

International offices

China | Hong Kong SAR | India | Indonesia | Qatar | Malaysia | Middle East |
 Singapore | South Africa | Thailand | Turkey

