



Benham & Reeves

Onslow Square, South Kensington, SW7

£3,000 per week, £13,000 per month + fees

🛏️ 3 Bedrooms 🚿 2 Bathrooms 🛋️ Unfurnished

A rarely-available 1,484 sq ft THREE-BEDROOM luxury lateral apartment finished to an exquisite standard and situated in a beautiful period building overlooking ONSLOW SQUARE.

Please [click here](#) for full detail

Property features

Three Bedrooms | Two Bathrooms | Reception/Dining | Feature Fireplace | Separate Galley Kitchen | EPC-D | Raised Ground Floor | Unfurnished | 1,484 sq ft | South Kensington Station

For more information about this property, please call our Knightsbridge branch on

020 7581 2112

Redress & Client Money Protection :

Benham and Reeves are members of The Property Ombudsman redress scheme and have Client Money protection with ARLA Propertymark.

You can find more information on our website at <https://www.benhams.com/membership/>



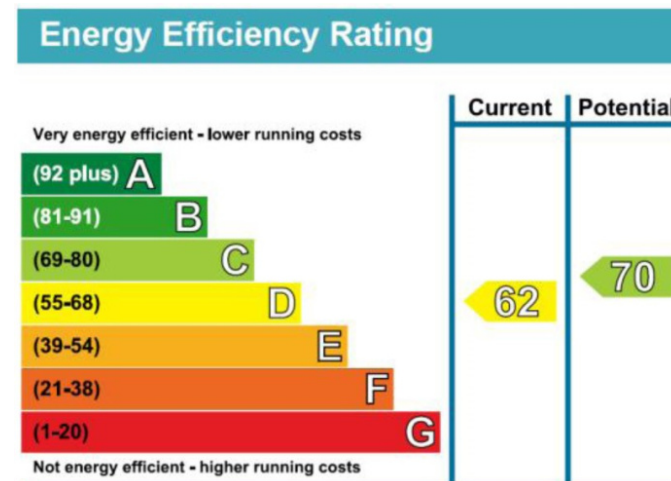
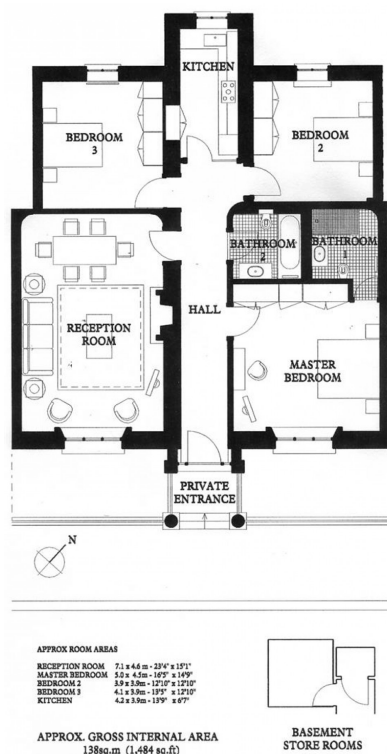
Benham & Reeves



Onslow Square, South Kensington, SW7

£3,000 per week, £13,000 per month + fees

www.benhams.com



London branches open six days a week Mon - Sat

Canary Wharf | City | Colindale | Dartmouth Park | Ealing | Fulham
Hammersmith | Hampstead | Highgate | Hyde Park | Kensington | Kew
Knightsbridge | Nine Elms | Shoreditch | Southall | Surrey Quays
Wapping | Wembley | White City | Woolwich

International offices

China | Hong Kong SAR | India | Indonesia | Qatar | Malaysia | Middle East | Pakistan
Singapore | South Africa | Thailand | Turkey



Benham & Reeves