



Benham & Reeves

Princes Gate, South Kensington, SW7

£25,000 per week, £108,333 per month + fees

 6 Bedrooms  6 Bathrooms  Furnished

An exceptional & opulent 9,050 sq ft 6-BEDROOM Period House on PRINCES GATE in South Kensington comprising six bathrooms, three receptions & accentuated by stunning furnishings.

This magnificent property includes a PRIVATE GARDEN and large ROOF TERRACE. Available on a Short Let basis.

Please [click here](#) for full detail

Property features

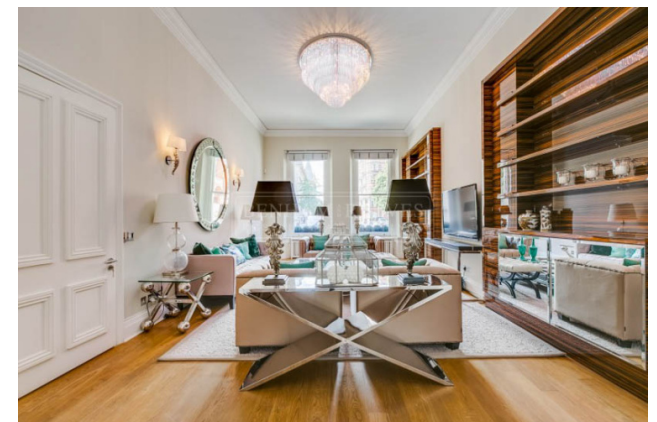
6 Bedrooms | 6 Bathrooms | 3 Receptions | Furnished | Fitted Kitchen | EPC-C | Lift, Residents Permit Parking | Private Roof Terrace and Garden | Nearby South Kensington Underground Station

For more information about this property,
please call our Knightsbridge branch on

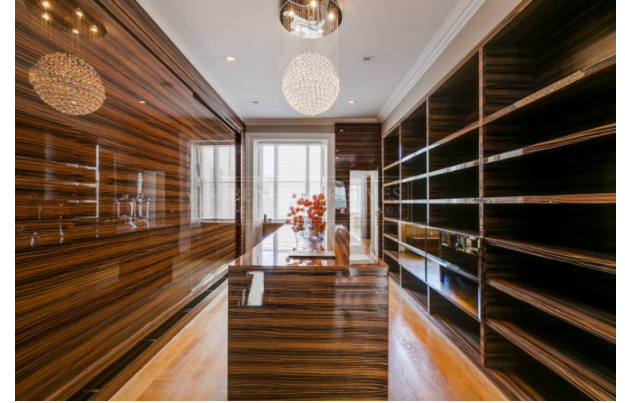
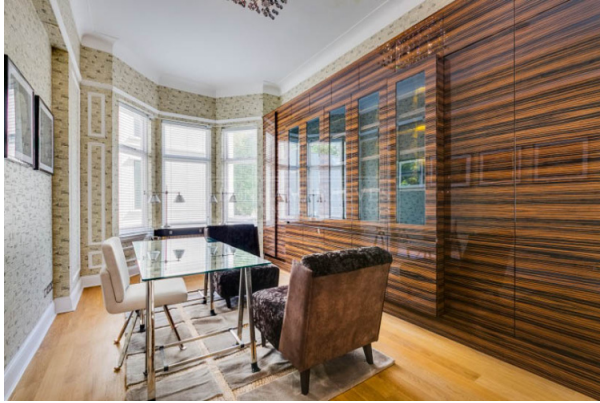
020 7581 2112

Redress & Client Money Protection :

Benham and Reeves are members of The Property Ombudsman redress scheme and have Client Money protection with ARLA Propertymark. You can find more information on our website at <https://www.benham.com/membership/>



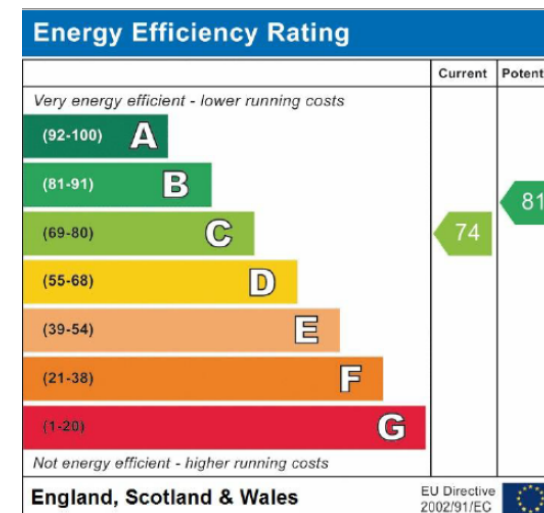
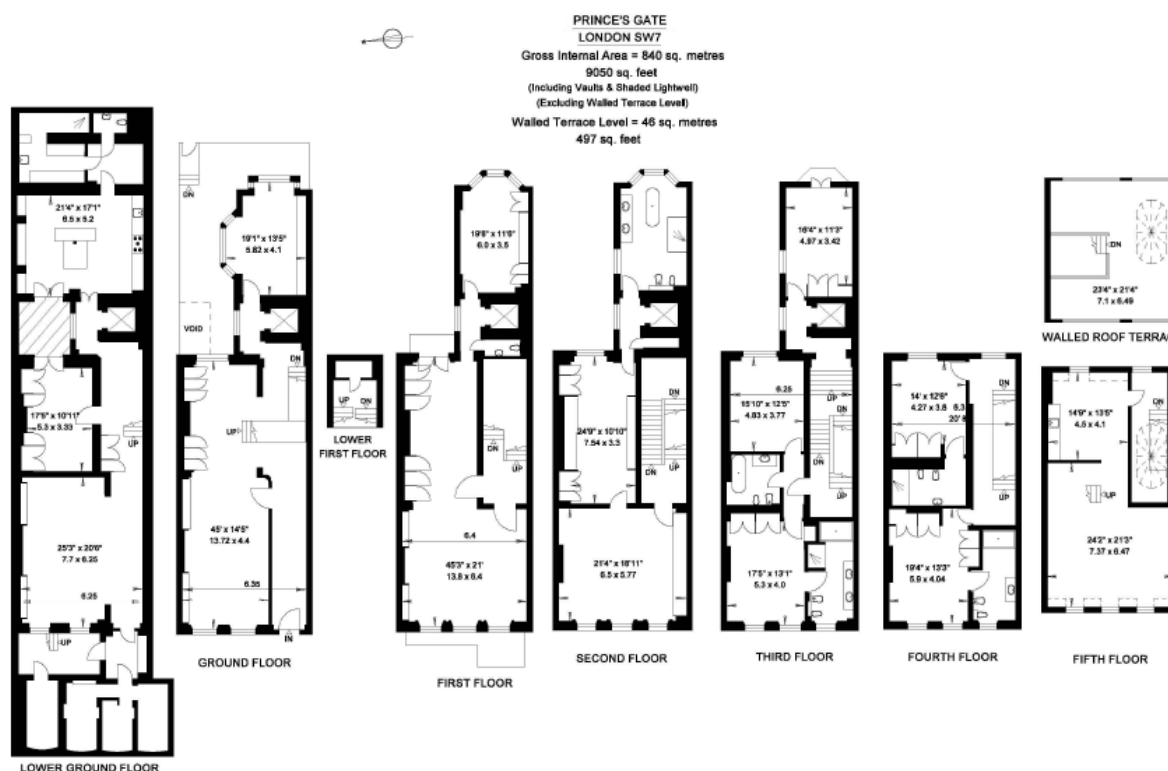
Benham & Reeves



Princes Gate, South Kensington, SW7

£25,000 per week, £108,333 per month + fees

www.benhams.com



London branches open six days a week Mon - Sat

Canary Wharf | City | Colindale | Dartmouth Park | Ealing | Fulham
Hammersmith | Hampstead | Highgate | Hyde Park | Kensington | Kew
Knightsbridge | Nine Elms | Shoreditch | Southall | Surrey Quays
Wapping | Wembley | White City | Woolwich

International offices

China | Hong Kong SAR | India | Indonesia | Qatar | Malaysia | Middle East |
Singapore | South Africa | Thailand | Turkey



Benham & Reeves