



Benham & Reeves

Millharbour, South Quay, E14

£485 per week, £2,102 per month + fees

🛏 1 Bedroom 🚿 1 Bathroom 🛋 Furnished

A modern 4th floor apartment excellently located in the South Quay area, within walking distance of Canary Wharf. Parking available by separate negotiation.

Please [click here](#) for full detail

Property features

One Double Bedroom | Family Sized Bathroom | Open Planned Living | Furnished | Modern Fitted Kitchen | EPC-B | 4th floor | 24 Hour Concierge | Residence Gym | South Quay DLR station

For more information about this property, please call our Canary Wharf branch on

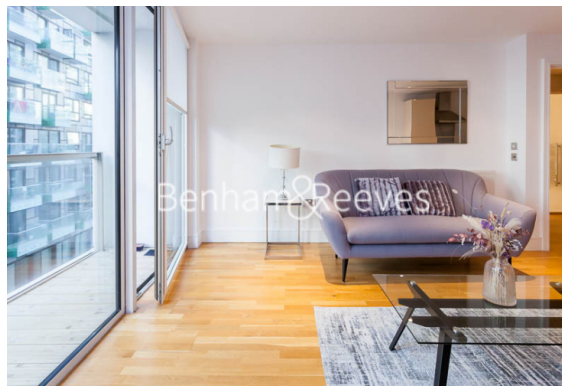
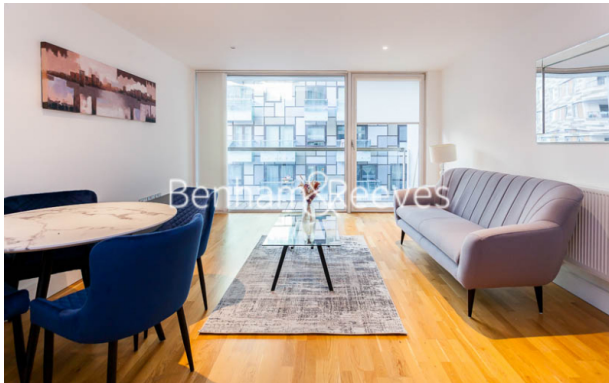
020 8036 3200

Redress & Client Money Protection :

Benham and Reeves are members of The Property Ombudsman redress scheme and have Client Money protection with ARLA Propertymark. You can find more information on our website at <https://www.benhamandreeves.com/membership/>



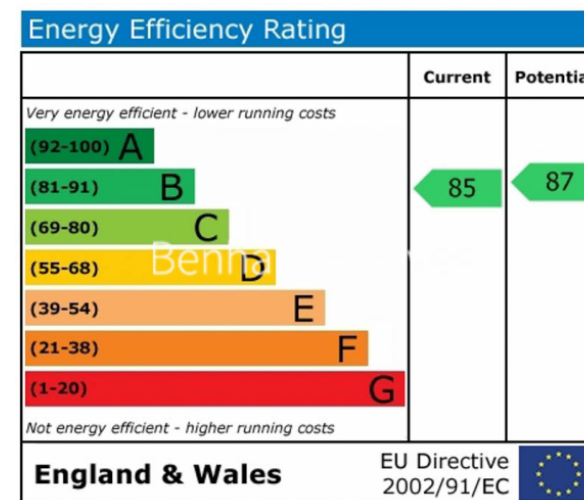
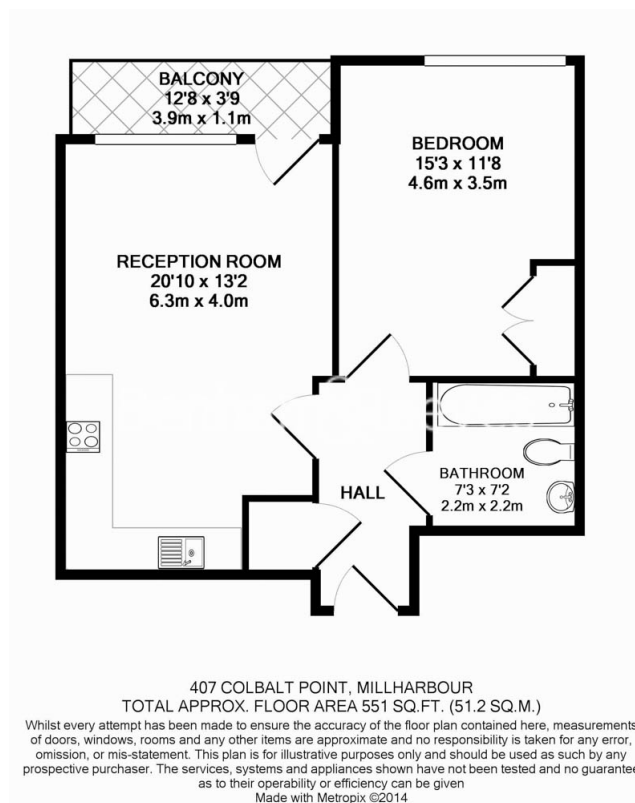
Benham&Reeves



Millharbour, South Quay, E14

£485 per week, £2,102 per month + fees

www.benhams.com



London branches open six days a week Mon - Sat

Canary Wharf | City | Colindale | Dartmouth Park | Ealing | Fulham
Hammersmith | Hampstead | Highgate | Hyde Park | Kensington | Kew
Knightsbridge | Nine Elms | Shoreditch | Southall | Surrey Quays
Wapping | Wembley | White City | Woolwich

International offices

China | Hong Kong SAR | India | Israel | Malaysia | Middle East | Pakistan
Qatar | Singapore | South Africa | Thailand | Turkey



Benham & Reeves