



Benham&Reeves

## **Greenleaf Walk, Southall UB1**

£370 per week, £1,603 per month + fees

🛏 1 Bedroom    🚿 1 Bathroom    🛋 Furnished

This stunning 2nd floor Manhattan Style apartment, with parking, is situated within an outstanding Berkeley development on the Western fringe of London featuring great views of the surrounding landscaped gardens. Southall Station (Zone 4) is a short walk away. EPC-B

Please [click here](#) for full detail

## Property features

**Underground parking | Gym | Cinema room | Residents lounge | Concierge | EPC-B | Wood floors | Balcony | Southall Station (Zone 4) is a short walk away.**

For more information about this property,  
please call our Southall branch on

**020 8154 1089**

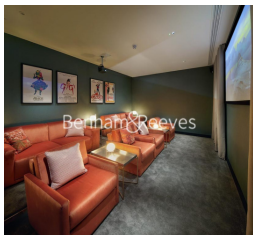
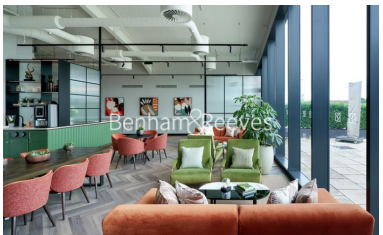
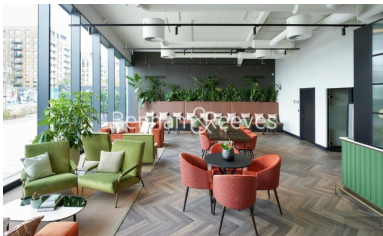
Redress & Client Money Protection :

Benham and Reeves are members of The Property Ombudsman redress scheme and have Client Money protection with ARLA Propertymark. You can find more information on our website at <https://www.benhams.com/membership/>



Benham & Reeves



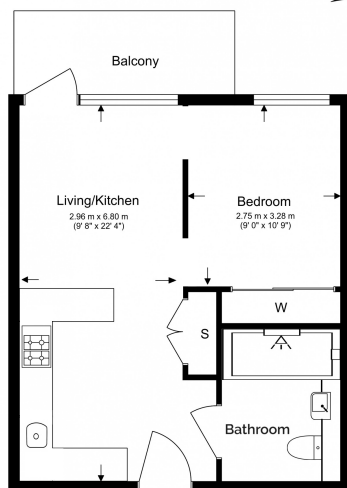


# Greenleaf Walk, Southall UB1

£370 per week, £1,603 per month + fees

www.benhams.com

Total Gross Internal Area  
39.5 Sq/m - 425 Sq/ft



Floor Plan measurements are approximate and are for illustrative purposes only. While we do not doubt the floor plans accuracy, we make no guarantee, warranty or representation as to the accuracy and completeness of the floor plan.

Score	Energy rating	Current	Potential
92+	A		
81-91	B	84 B	84 B
69-80	C		
55-68	D		
39-54	E		
21-38	F		
1-20	G		

## London branches open six days a week Mon - Sat

Canary Wharf | City | Colindale | Dartmouth Park | Ealing | Fulham  
Hammersmith | Hampstead | Highgate | Hyde Park | Kensington | Kew  
Knightsbridge | Nine Elms | Shoreditch | Southall | Surrey Quays  
Wapping | Wembley | White City | Woolwich

## International offices

China | Hong Kong SAR | India | Indonesia | Qatar | Malaysia | Middle East |  
Singapore | South Africa | Thailand | Turkey



Benham & Reeves